



ROLLING HILLS  
COUNTRY CLUB

A HISTORY

**ROLLING HILLS COUNTRY CLUB**  
27000 Palos Verdes Drive East  
Rolling Hills Estates, California 90274

1962 - 1990

Published by Anchor Press  
San Pedro, CA.  
Art and Graphics by  
K.E. Tucker Graphic Design

**FIRST EDITION**  
**1990**



## TABLE OF CONTENTS

FRONTICE PIECE:	<b>THEODORE G. ROBINSON, Architect</b>	1
FOREWARD:	Commemorative Edition remarks by the Editor	3
CHAPTER 1:	<b>IN THE BEGINNING</b> A history of the original “3 par” course	5
CHAPTER 2:	<b>PURSUING OMER’S DREAM</b> Land acquisitions and building the “Double-nine”	7
CHAPTER 3:	<b>LIVING WITH THE “DOUBLE-NINE”</b> Building and playing 18 holes	11
CHAPTER 4:	<b>PRECIOUS ACERAGE</b> Proposals to acquire land - building the Clubhouse	13
CHAPTER 5:	<b>18 HOLES!</b> Construction and dedication of the full 18	15
CHAPTER 6:	<b>FINE TUNING</b> On-going changes in the Golf Course	17
CHAPTER 7:	<b>STRUCTURES</b> A history of buildings	19
CHAPTER 8:	<b>NEW CONSTRUCTION</b> Planning and building the expansion	21
CHAPTER 9:	<b>REALIZATION, OCTOBER, 1989</b> The finished new facilities	25
CHAPTER 10:	<b>THE GOLF COURSE TODAY</b> Course layout - photos and graphics of each hole	33
CHAPTER 11:	<b>SOCIAL-ability</b> Parties, social events and social golf	57
CHAPTER 12:	<b>IN SUMMATION</b> Remarks by Club Dignitaries	61
APPENDICES:	<b>A PLETHORA OF RHCC FACTS</b>	vi



## APPENDICIES:

1.	CLUB OFFICERS	63
2.	COMMITTEE CHAIRMEN	64
3.	WOMEN'S OFFICERS	65
4.	MEN'S GOLF CHAMPIONS	66
5.	OTHER GOLF CHAMPIONS	66
6.	COUPLE'S CHAMPIONS	67
7.	CLUB CHEFS	67
8.	CLUB MANAGERS	67
9.	GREEN SUPERINTENDENTS	68
10.	TENNIS PROS	68
11.	PUTT POURRI EDITORS	68
12.	STILL ACTIVE CHARTER MEMBERS	69
13.	HONORARY MEMBERS	69
14.	HOLES-IN-ONE RECORDED	71
15.	COURSE RECORDS	72
16.	GOLF STAFF	72



## *"It Takes Twenty Years To Make A Golf Course !"*

(Ted Robinson)

**Ted Robinson** began his career with degrees in land planning and landscape architecture from the University of Southern California. After years of experience in land planning, including teaching at U.S.C., this background evolved into his dominant interest, golf course architecture.

### **HE HAS DESIGNED AND CONSTRUCTED WELL OVER 100 GOLF COURSES**

Over the past 25 years he has become one of the world's leading imaginative and respected golf course architects. His concepts have materialized into beautiful and challenging courses that have become show cases for golf at its finest around the world.

He has designed and constructed well over 100 golf courses, and has re-designed and

remodeled over 25 other existing courses. He is a member of the American Institute of Planners and has served as President of the American Society of Golf Course Architects.

Just a sampling of his courses include Ocotillo GC, Chandler, Arizona; Lakewood CC, Hiratsuka, Japan; Desert Springs, Indian Wells, Lakes CC and 17 other courses in the Palm Springs

area; Bear Creek East, Dallas/Fort Worth; Big Canyon CC, Newport Beach; Fairbanks Ranch CC, Rancho Santa Fe; Lakewood CC, Kanagawa, Japan; Mission Bay, San Diego; Rancho Bernardo; Rams Hill; Singing Hills and many others.

(Editor's comments) We at RHCC are proud to have **Ted's** talents exhibited in our magnificent golf course, designed early in his career. And prouder still that he has risen to World Prominence as a Golf Course Architect.

**Ted's** "Trademarks" are extensive use of water hazards- ("Lakes are less costly to maintain than turf") - railroad tie retainers, and tiered greens, such as our 4, 9, 10 and 15. One of **Ted's** courses, Ocotillo Golf Club in Chandler features 18 miles of shoreline in 27 holes!



THEODORE G. ROBINSON,  
Architect



## FOREWORD



This Rolling Hills Country Club 1990 Commemorative Publication was inspired by the current Secretary, **Dick Ettington**, and commissioned by the **1989 Board of Directors**.

It was their intention to document some 28 years of RHCC history, growth and progress for the interest of the Members — past, present and future, and to preserve these memorabilia for the generations to come.

The \$ 3.8 million facility expansion program completed this year was a monumental undertaking, including a new pro shop, subterranean parking structure, and the main Clubhouse renovation and expansion to more than twice its' original floor space.

The new expansion results in our Clubhouse facility capabilities being among the finest of all Private Clubs. The 6 individual bar-grills and dining areas, together with a totally new modern kitchen, now enables our Staff to serve all Membership needs, in addition to being the largest banquet host in the area.

### SO MANY INDIVIDUALS HAVE CONTRIBUTED SO MUCH

So many individuals have contributed so much during the planning and construction phases comprising over three years that it is impossible to properly thank them all. But permit me to single out a few



**DR. MEL ROWAN, CHAIRMAN,  
CLUB DEVELOPMENT COMMITTEE**

who have given so much of their time and individual expertise:

First, **Dr. Mel Rowan**, head of the Long Range Planning Committee, who has been on top of the project since its inception and **Dan Sasahara** whose budgeting and financial expertise proved the feasibility of the program. Our gratitude pour out to our General Manager **Bryan Bahman** who, while keeping abreast of his normal managerial duties, was on the job-site constantly, ironing out scheduling and construction sequencing to

minimize inconveniences to the Members.

Attorney **Howard Fjellstrom** has been constantly involved in all of the legalities of contracts and agreements. Secretary **Dick Ettington** has handled the



**BRYAN BAHMAN  
GENERAL MANAGER**

intricacies of scheduling throughout the construction phases, and **Burt Larson** supervised the actual building on an almost daily basis. President **Bill Delaney** and **Don Bradfield** have been heavily involved over the past two years.



**BERT  
LARSON**

**HOWARD  
FJELLSTROM**





DAN SASAHARA



DON BRADFIELD

Much credit for the success of the current expansion is due to the efforts of the predecessor teams. Long Range Planning Chairmen, successively **Marc Frederic, Ron Ruffalo, How-**



RON RUFFALO

**Dick Ettington**  
**Jim Giacaloni**  
**Clarence Medema**  
**Bob Bowles**  
**Eldon Mangold**  
**Helen Green**  
**Teb Jean**

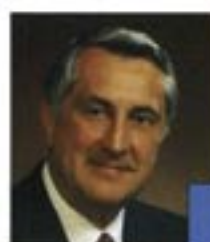
Board Coordinator  
Photographer  
Distribution  
Production Mgr.  
Club Properties  
Historian  
Historian



HELEN GREEN



TEB JEAN



ELDON MANGOLD



CLARENCE MEDEMA



JIM GIACALONI



BOB BOWLES

**ard Huget and Eldon Mangold** all contributed endless hours of planning and negotiations. Later, as Club President, **Mangold** continued his leadership as the current plans progressed and construction got underway.

Project architects **Johannes Van Tilburg and Partners** and contractor, **The Henry Construction Co.** are thanked for their utilitarian design and timely construction. **Carol Schultz** of Northwood Design handled all the interior design from wall paper to carpets to furnishings.

And of course, my editorial thanks to the **Book Staff** listed below, to many who read and critiqued the manuscript, and those who contributed pictures from their personal files.

The Staff hopes that this volume will recall memories of early members, instill pride in active members, and challenge future members to perpetuate the past achievements of growth, progress and excellence —

Excellence in Club Services, excellence in golf course conditions and challenges, and excellence in all member and guest amenities.

We are proud to be Rolling Hills Country Club.

**Wes Kirchoff**  
Editor



#### BOOK PRODUCTION STAFF:

## CHAPTER ONE



### IN THE BEGINNING

**Omer K. Tingle** is an avid golf fan. Your editor interviewed **Omer** in 1969 and he said,

"I'm a 10 handicap golfer and probably should be a 12 or 13!"

I interviewed him again this year, some 20 years later, and he said,

"I'm a 16 handicap now, and probably should be a 20!"

Do these conversations confirm that **Omer** is not only an *avid* golfer, but also a *typical* golfer?

**Omer** is a retired Army Air Force celestial navigation instructor and an early builder/



OMER K. TINGLE - ENVISIONARY AND FOUNDER OF ROLLING HILLS COUNTRY CLUB.

developer in the Palos Verdes area. He is also an visionary! As early as 1959, he envisioned a Private Country Club arising out of the bean fields and vegetable plots on the somewhat desolate Palos Verdes Peninsula.

He owned a subdivision tract high atop the hill on Palos Verdes Drive East, but had no immediate plans to develop that tract. There was a parcel of 14.6 acres on P.V. Drive East that was surrounded by a lot of acreage that appeared to be a great location for a golf course. The plot was owned by

another local developer, **George Chacksfield**, who was interested in doing a tract development at the time.

In 1962, the two developers got together and negotiated an "even-stein" land swap, no dollars exchanged, and hence **Omer K. Tingle** took title to the so-called "Eastside Property", the site of our present Clubhouse and the first two holes.

**Omer** said in the recent interview,

"My plans from the very beginning were to ultimately develop a full scale 18 hole golf course, owned by the members. I decided to start by building an Executive Nine on the land, and hoped that downstream I could acquire additional surrounding acreage."

#### ON NOV. 9, 1963 THE NEW COURSE WAS DEDICATED

**Omer** immediately contracted for the services of **Theodore G. Robinson**, a local resident and friend who had already designed some of his first golf courses including Pauma Valley and Mesa Verde. **Ted** designed the original 9 hole, par 29 layout, and grading got underway in April of 1963.

It was a sporty nine playing

1260 yards with individual hole lengths from 85 yards to 260 yards. All were par 3's except for holes 1 and 6 which were 4 pars. The course featured two half acre lakes and a unique "island tee" that was in the center of the lake on the ninth hole with



DON MANSFIELD (LEFT), ROLLING HILLS ESTATES CITY ADMINISTRATOR, CHECKS THE FIRST HOLE WITH ARCHITECT TED ROBINSON AND DEVELOPER TINGLE. (1963)

pedestrian access over two wooden bridges.

On November 9, 1963, the new course was dedicated and opened to the public. Green fees were \$1.25 weekdays, \$1.50 on weekends, for nine holes of play.

**Joe Deeble** was engaged as the first General manager and served thruout the construction and the early years of club expansion.

A young **Pat Chartrand** was hired as the Club's Golf Professional even before the course was finished. At that time, **Pat** held the



## CHAPTER TWO

### PURSuing OMER'S DREAM

While the "Executive Nine" hole course was getting virtually all of the play it could accommodate, **Omer Tingle** persisted in his longer term goal of expanding to a regulation 18 hole private Country Club. He had been talking with the **Chandlers** about acquiring more land from them on the West side of P.V. Drive for quite some time.

The only answer was to solicit investments from the public. - sell stock in a private corporation, and thus take another giant step toward **Omer's** goal for a private club.

The California Corporation was chartered July 30, 1965 and in 1968 sought to sell 265 charter memberships at the offering price of \$3650.00. Initial monthly dues were pegged at \$44.

After a quantity of memberships were sold, the corporate officers were elected and the Charter Board was comprised of the following:

- |           |                              |
|-----------|------------------------------|
| Pres.     | <b>Omer K. Tingle</b>        |
| Sec/Treas | <b>Richard Roemer</b>        |
| Gen. Mgr  | <b>Joe Deeble</b>            |
|           | <b>Louis d'Assalenaux IV</b> |
|           | <b>Jack Drown</b>            |
|           | <b>Jack D. Rogers</b>        |
|           | <b>James Strutzel</b>        |
|           | <b>Fred Tourtelot</b>        |
|           | <b>Dr. Charles Zigrang</b>   |



FOUNDER OMER TINGLE, COUNTY SUPERVISOR BURTON CHACE AND ARCHITECT TED ROBINSON SURVEY THE GRADING OF THE "DOUBLE-NINE" LOOKING DOWN THE PRESENT 3RD FAIRWAY (1968)

When it finally appeared that some sort of a deal might be acceptable to **Chandlers**, **Omer** decided it was time to make his next move. He was joined in the venture by an old friend and fellow businessman, **Cliff Richards**, still a Club Member.

**Ted Robinson** was summoned to design the novel course with nine fairways and two tees and two greens for each fairway.

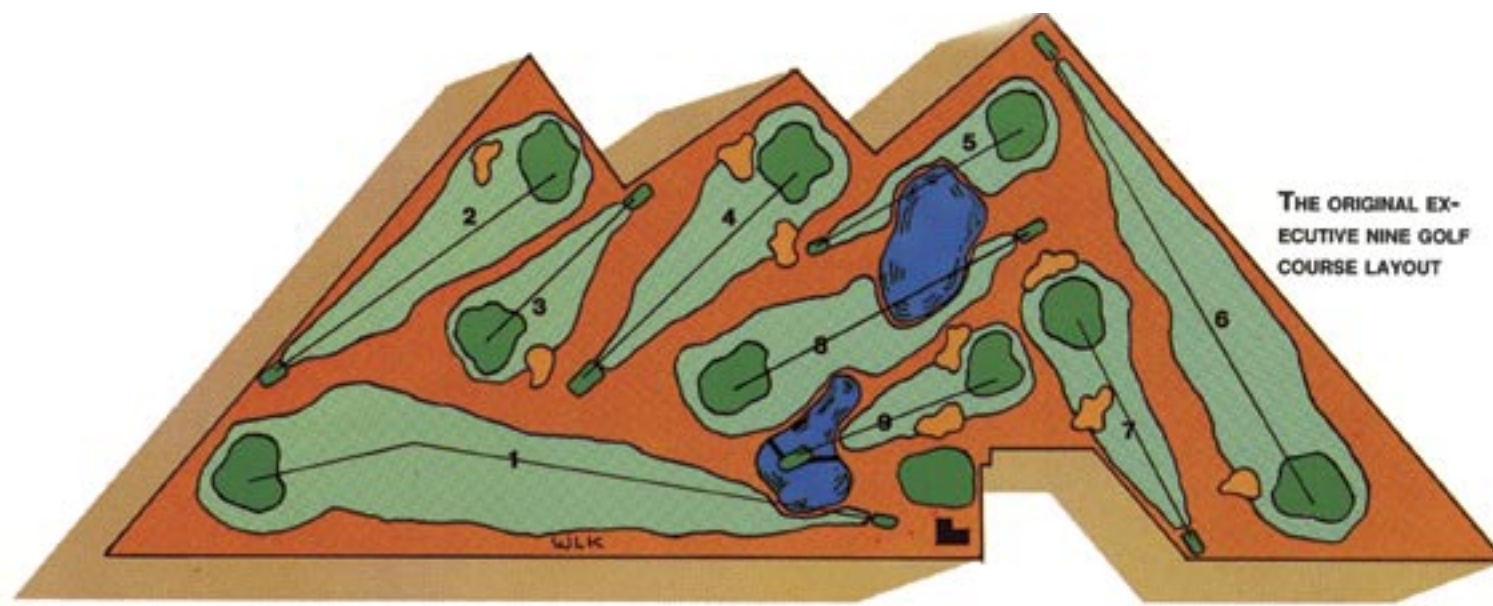
#### THE CALIFORNIA CORPORATION WAS CHARTERED JULY 30, 1965

They completed negotiations with **Chandler** in June of 1967 and leased 65 acres West of the drive and immediately announced plans to build a "Double Nine" golf course on the limited acreage.

Their tasks were to be monumental: Land acquisition, course design, massive earth moving and grading, sprinkler systems, plantings, etc. all added up to an impressive dollar investment.



JOE DEEBLE AND OMER TINGLE INSPECT GRADING IN PROCESS



THE ORIGINAL EXECUTIVE NINE GOLF COURSE LAYOUT

Inglewood CC course record at 62, had won a number of titles including the L.A. City Junior Champion and was the U.S. Army Champ in 1959.

**Pat** in addition to being a P.G.A. professional, has many musical talents playing saxophone, clarinet and flute. He played with many of the big bands including Tommy Dorsey, Harry James, Billy May and played for recordings for Xavier Cougat, Horace Heidt and Van Alexander.

He met **Barbro** in 1961 when he was playing with the Harry James orchestra in Reno. **Barb** has constantly been a fashion coordinator, buyer and always happy attendant in the proshop.

**Paul Halstead** joined **Pat** as the original teaching Assistant Pro.

Other early staffers were waitress, chef and dishwasher, **Mina Hara**, and barman, waiter and busman, **Bobby San Jose**, the 1930 Olympics Pentathlon Gold

Medal winner. **Pat Kovacs** was the club secretary and "girl Friday". **Charlie Cutler** handled golf starting duties.

In the pro shop, **Jack Hollis** joined **Pat** in 1970 and **Gayle Lanning** came as Fashion Coordinator in 1971

The new Executive Nine proved to be a popular community asset, with as many as 300 rounds played on busy weekend days, and several golfing groups were formed, including the Ladies "3 Par Club" whose members still hold an annual Christmas reunion. **Dottie Grover** was their first Club Champion.

A popular men's group called themselves "The Muckenfusses" and were comprised of such notables as **J. Walker Owens**, **Paul Moore**, **Dr. Chuck Zigrang**, **Joe and Oak Druliner**, **Tom Jones**, **Ed Hummel**, **Walter Coursen**, **Bart Earle**, and others.

**Omer** said that he always felt the future of the new Club would depend heavily on young golfers, and he emphasized Junior Golf programs from the very beginning.

And hence, there it was! The diminutive clubhouse with its wood planked patio, a netted cage for lessons and practice, the

flock of white ducks begging for tidbits, and nine honest-to-gosh golf holes!

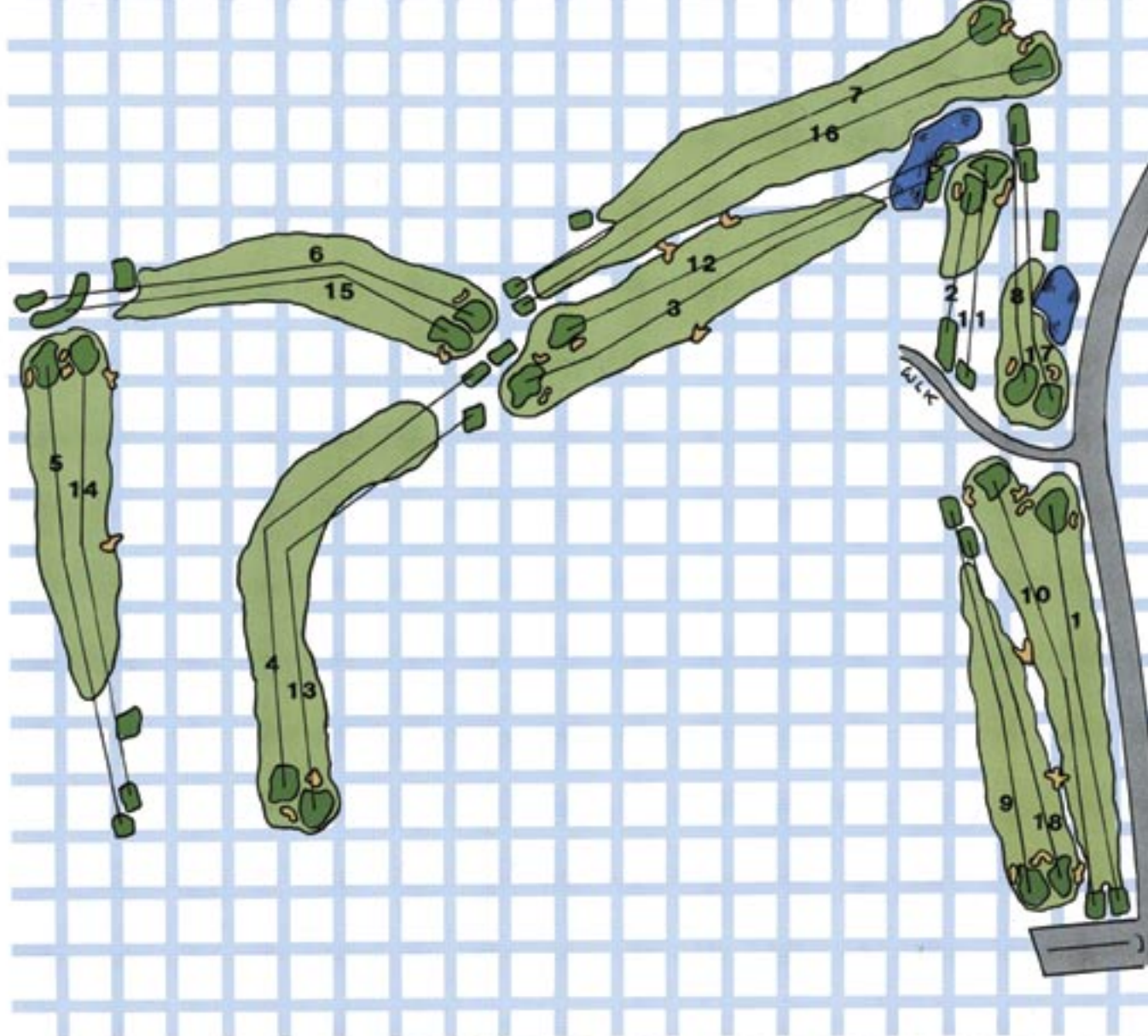


MINA HARA



THE ORIGINAL MOBILE CLUBHOUSE

ROLLING HILLS ESTATES COUNCILMAN JACK HOPKINS, MAYOR TEENA CLIFTON AND PRO PAT CHARTRAND ON OPENING DAY OF THE 3-PAR.



**DOUBLE NINE!** REPRODUCED ABOVE FROM THE ORIGINAL COURSE LAYOUT DRAWING PREPARED BY TED ROBINSON, THE UNIQUE ARRANGEMENT FEATURED TWO GREENS AND TWO TEES FOR EACH OF THE NINE FAIRWAYS.

**A MASSIVE DRAIN** WAS INSTALLED DURING GRADING OF WHAT IS NOW THE SEVENTH FAIRWAY



The Charter Committee Chairmen were:

House	<b>Tom Jones</b>
Membership	<b>Buck Weaver</b>
Finance	<b>Joe Druliner</b>
Golf	<b>Don Kircher</b>
Greens	<b>Gene Parana</b>
Entertainment	<b>Earl Smith</b>
Publicity	<b>Ed Hummel</b>
Swimming	<b>Wally Lynn</b>
Clubhouse	<b>Walter Coursen</b>
Properties	<b>Bart Earle</b>

In October of 1967, the Rolling Hills Estates Planning Commission granted a conditional use permit to allow construction of the golf course. Approximately a year of planning and design followed before the groundbreaking in May of '68

The first general membership meeting was held at the Jump'n Jack Restaurant on Feb. 28th, 1969, giving the members an opportunity to meet each other and to explain the status on the new "Double-Nine", now planted.

It was also appropriate to brief the members on the plans for a new Clubhouse being developed, and to solicit tree donations for the golf course.

The original cost projections were a total of \$1,276,500 including \$600,000 for real property, \$353,500 for course construction and \$260,000 for the clubhouse.

Then early disaster struck in February of 1969 when the "worst rainstorm in 85 years" dumped 35 inches of water for the season on the freshly graded premises! Two inches of rain in one night, on the already saturated ground,

**ON OCTOBER 9, 1969 THE NEW "DOUBLE-NINE" WAS DEDICATED**

caused massive erosion and serious schedule setbacks. \$18000 was required to repair the damages and severely strained the already tight budget. An assessment was discussed, but avoided.

1969 was truly a formative year for the young Club. In May, the "NO NAME" newsletter, Volume 1, Issue 1 was launched by founding Editor **Wes Kirchoff**.

A "Naming Contest" resulted in a \$10 prize for **Merle Bowker** who coined the name, "Putt-Pourri"



**TWO INCHES OF RAIN** IN ONE NIGHT ON TOP OF ALREADY SATURATED GROUND CAUSED ENORMOUS DAMAGE. **JOE DEEBLE** SURVEYS SOME OF THE EROSION. (1969)

June of 1969 marked groundbreaking for the new clubhouse.

The RHCC Women's Club was launched when **Betty Forbes, Dee Strohecker** and **Betty Kirchoff** hosted an organizational meeting that resulted in **Dee Strohecker** being elected as Charter Chairman.

Inclement weather continued to prevail, preventing work on the course and slowing maturity of the newly planted greens and fairways.

Finally, On Oct. 9, 1969, the new "Double Nine" was dedicated with an opening tournament. Our first "Club Champion" was **Mike Gleason** who was the low gross player in the first foursome to complete 18 holes of play, scoring a 95!

**THE WORST RAINSTORM IN 85 YEARS**

By the end of that first day, the "Course Record" was broken many times and at sunset, **Fritz Probst** held the title with the days low gross of 77!





## CHAPTER THREE

### LIVING WITH THE "DOUBLE-NINE"

#### FIRST DAY PLAYERS



OCTOBER 9, 1969 OPENING DAY SAW BOB MCKINNEY, DR. LLOYD HALL, ED HUMMELL AND OMER TINGLE OUT TO TEST THE NEW COURSE.

Even before the "Double Nine" course was designed, there were critics who gave a hundred reasons why the concept wouldn't work. One of the local newspapers even published a very erroneous story of how there would be a tee and a green at each end of the fairways, with golfers simultaneously playing the fairway in two directions, hitting into the players approaching from the other end!

When the course opened in October, 1969, it was time to test the theories advanced by the planners. Tee times were spaced at 14.0 minutes for 18 hole players, the theory being that as the first groups completed their first 9 holes, starting players would sandwich in between, creating effectively 7.0 minute spacing for the balance of the day.

The theorists proved their point, as there was remarkably little conflict or inconvenience. Besides, Rolling Hills was now a 27 hole complex with the Executive nine on the East side, and the "Double Nine" eighteen on the West side.

A lot of players found it fun to play only nine on the West side and then play the executive nine holes. With that arrangement, they could sandwich in on 7 minute intervals on the West, between groups that were going to play a full 18.

#### ROLLING HILLS WAS NOW A 27 HOLE COMPLEX



OMER TINGLE AND FRIEND WATCH AS THE FIRST OF OVER A MILLION GALLONS OF WATER STARTS TO FILL THE RESERVOIR ON No. 5. (1968)

That scheme actually worked so well that **Jim and Lyda Cook** started staging Juniors' tournaments, playing 9 holes on each side, and they dubbed this arrangement "Peacock Bowl". It wasn't long until couples and men were also scheduling Peacock Bowl tournaments.

Possibly the biggest fault with the double-nine was the severe climb from the 4th and 13th

greens up to the 5th and 14th tees. Those greens sat approximately where 7th green is today, and the next tees were a steep climb of 60 feet vertically to the following tees, essentially on the top of the hills behind the half-way house.

The tee-off was basically from that lofty point down the present 9th fairway, with the "weed" tree in the center.

Since we didn't have golf carts then, that 60 foot climb proved to be a bit arduous for many members. But the problem was solved when the club bought a golf cart "van" and shuttled each group of players up the hill to the next tee!



## CHAPTER FOUR

### PRECIOUS ACREAGE

The double-nine was a 72 par layout measuring 7210 yards from the back tees. It was shortened by about 20 yards, moving up the No. 1 and 10 tees to make room for the tunnel in 1970.

RHCC was accepted into membership of the Southern California Golf Association in November of 1969 and received the first SCGA official course rating of 71.4 in July, 1970.

And even as the double-nine was put into play, Omer and the Long Range Planning Committee were investigating the possibility of acquiring more land to build another nine.



ASTRONAUT ALAN SHEPARD & CBS COMMENTATOR WALTER CRONKITE WERE PRESENTED AN AWARD AND HONORARY MEMBERSHIPS AT RHCC FOR STAGEING THE FIRST GOLFING EVENT FROM OUTER SPACE. MASON MALLORY AND DICK ROEMER MAKE PRESENTATION TO CBS'S THOMAS MITCHELL. (APOLLO 11, 1970)



OMER TINGLE AND GREEN SUPERINTENDENT HECTOR CLARK INSTALL THE FIRST "PRIVATE" PROPERTY SIGN. (1968)

While the "double-nine" was in play with the greens and fairways maturing, Rolling Hills Country Club was still short of Omer's goal of a full regulation 18 hole golf course. More land was a MUST!



SOME UNDEVELOPED LAND BORDERS THE GOLF COURSE

Omer resigned citing "other business interests" in August of 1970, but his dream and master plan was now firmly imbedded in the minds of the Board and members who were to continue an unflagging pursuit of his objectives.

The Club was showing remarkable progress, not only in the growth of the peninsula's new "green belt", but also in the completion of constant club improvements.

#### THE QUEST FOR MORE LAND

Yes, the young Club was coming of age, but the quest for more land and how to finance it

remained a priority item. In 1970 and '71, the Club Expansion Chairman was Dr. Chuck Kirsnis who investigated many potential land purchases.. Ted Robinson was consulted regularly on the feasibility of building nine more holes on the various lands surrounding the existing double-nine. He, in fact, drew rough layouts on at least 3 proposals before the final land leases were consummated.

In December of 1971, a lease was negotiated with Chandler on 22 acres to the West of the double-nine.

(NOTE: "Chandler" as used herein refers to "The Chandler Corporation" and/or "The Chandler Trust".)

Much credit for lease and purchase agreements is due to the efforts of '71 & '72 President Dick Roemer and John and Jack Robertson representing the Chandler interests.

Ted Robinson was retained to make finished plans for the conversion of the double-nine AND the 3-par course into a genuine 18 hole golf course. The last leg of Omer's dream had arrived!

Some of the land options previously considered included the Dan Butcher property lying South of the clubhouse, but Ted determined that at best, only two holes could be added there, and zoning and screening problems seemed insurmountable.

During this era, there were talks with the Kramer Tennis Club exploring either a combining of the two clubs, or our outright purchase of the Kramer property.

The most obvious possibility to acquire land was the Chandler properties to the West. The land was there, but would it be made available? Negotiations with the Chandlers were on going with a number of different options discussed, all the while consulting with Ted Robinson. He concluded, for example, that portions of the property near Dapplegray school were just too hilly to be feasible. The massive amount of dirt to be moved would not be economically possible.



LADIES CHAMPS!

IN THEIR VERY FIRST YEAR OF WAGA TEAM PLAY COMPETITION, THE RHCC LADIES TEAM WON THEIR DIVISION AGAINST 16 CLUBS. PICTURED (STANDING) JOY FAYWEATHER, BEV ROEMER, ANN TINGLE, PATTY PATTEN, ROSALIE STOCKINGER, PEDIE ANDERSON, JOAN WHITING AND NITA LUKE. (FRONT) HELEN KAZELSKIS, RUTH ROBERTS, NELL COOREA & PAT FELGAR. (NOT IN PHOTO) PAULA YATES, DONNA CONNORS & GAYL ETINGER, TEAM CAPTAIN. (1971)

Thru the years, there have been many plans for expansion of both the golf course and the clubhouse and even a plan to start over with a totally new 18 holes and new clubhouse, all of which were scuttled for one reason or another.

Considerable thought and planning went into a proposal to build a new clubhouse on the 16th, which would require just a bit of land on the South side of the Chandler gravel pit WHEN it was filled. These dreams called for a new clubhouse atop the hill with a spectacular view of the city, a hole realignment to provide "9-in, 9-out", and an ultimate driving range if a deal could be reached with Chandler. That plan was scrapped because it was TOO far in the future, and success depended on unknown land acquisition.

Then came perhaps the most grandiose scheme of all, which



HOWARD HUGET (LEFT) AND MARC FREDERIC SPENT YEARS WORKING ON VARIOUS EXPANSION PLANS.



called for selling the existing Club properties and building a brand new championship golf course, a fabulous clubhouse, tennis courts, driving range and all the amenities.

The massive plan that included a new Rolling Hills Country Club, was for a new planned development community, proposed by the Cayman Development Co. in conjunction with Chandler. The development proposed some 532 living units surrounding the golf course, all to be constructed on the FILLED gravel pit. Ted Robinson was again called in to design yet another golf course.

In April, 1984, the membership voted by a 4:1 margin to proceed

with the plans. Mark Frederic, Ron Ruffalo and Howard Huget were Club Long Range Planning Chairmen who spent endless hours trying to resolve the many problems facing them.

Two years later in 1986, Chandler announced that they were unable to reach an agreement with Cayman, so another plan was scrapped. Now it was obviously time to consider expansion of the clubhouse and stick with the existing golf course.

During his term in 1986-87, President Eldon Mangold pressed for longer range planning and continued discussions on additional land acquisition.

And the quest for land continues, even as this is being written. The obvious priority is to purchase some of the leased land to preserve the integrity of our existing golf course. And longer "Long Range Plans" to acquire additional land from Chandler are being assessed. Some envision ultimately a third "nine", driving range and other expansions that could only be achieved with yet more acreage.

KEY TO CLUB PROPERTIES STATUS:

- 34.51 ACRES OWNED BY RHCC
- 27.04 ACRES LEASED FROM CHANDLER CORPORATION
- 37.76 ACRES LEASED FROM CHANDLER TRUST
- 99.31 TOTAL ACRES

18 HOLES!

The December, 1971 lease agreement with Chandler for 22 acres West of the double-nine was the giant step to assure our growth to a full 18 hole golf course. Our total lands (owned and leased) now comprised 99.31 acres, certainly less than the 130 or so acres desired for a 18 hole complex.

Architect, Ted Robinson, had been called in again prior to the lease culmination, and had already made tentative plans for a new course layout.

He had determined that the new 22 acres was not enough land to build nine more holes. Then he initiated a plan that was workable, but necessitated elimination of the 3-par course and building 2 new holes on the Eastside property.

The lease terms were \$3250 per month with an option to purchase within five years for \$550,000.



PRESIDENT DICK ROEMER (LEFT) AND TED ROBINSON EXPLAIN COURSE EXPANSION PLANS PROJECTED ON A WALL AT A SPECIAL MEETING IN 1971.



THIS 1854 MAP OF RANCHO DE LOS PALOS VERDES SHOWS THE RANCHES OF DON JOSE AND JUAN SEPULVEDA. AH, IF ONLY THEY COULD SEE IT NOW!

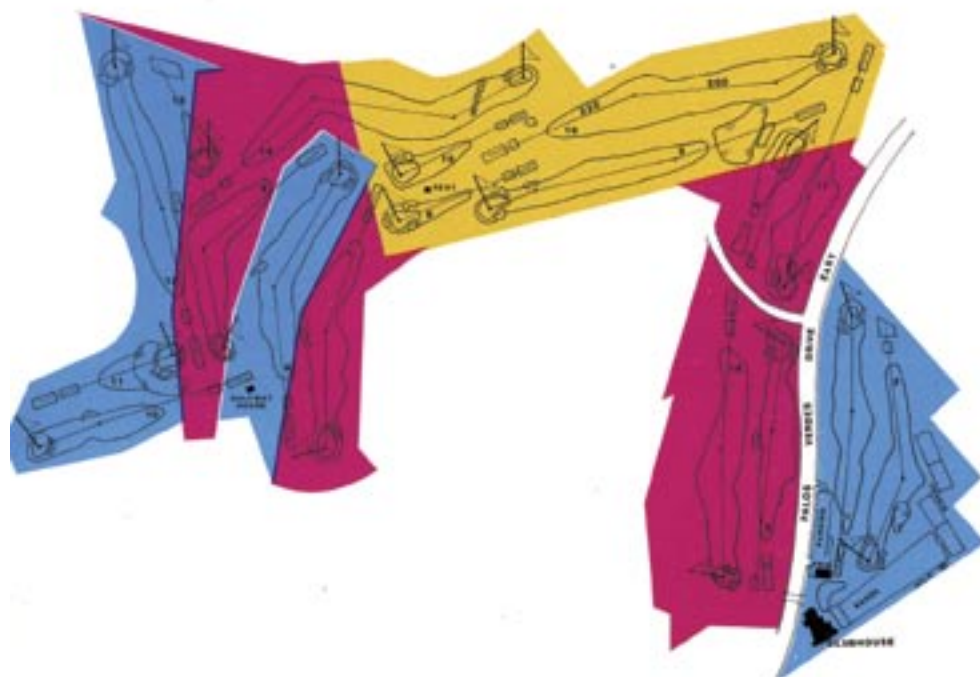
The purchase option was exercised in October of 1976 for most of the land occupied by holes 8, 10, 11, 12 & 13.

President Dick Roemer and Treasurer, Jack Reed, and their committees spent arduous hours planning budgets and cash schedules for submission to the Board.

Jack then served two years plus as President and proved to be a capable financial manager during trying years.

**THE PURCHASE OPTION WAS EXERCISED IN OCTOBER OF 1976**

STATUS OF CLUB PROPERTIES IN 1989





## CHAPTER SIX

### FINE TUNING

The tentative budget approved by the Board was for \$767,500, of which \$400,000 was for golf course construction and the

#### AUTHORIZE SALE OF AN ADDITIONAL 100 MEMBERSHIPS

balance for fencing, financing and clubhouse expansion. A \$400,000 line of credit was provided by the Imperial Bank thanks to arrangements thru **George Graziadio** with individual members guaranteeing the loan.

At this time, the membership stood at 315, and it was decided to authorize sale of an additional 100 memberships scaled from \$6950 to \$8200 each, as an additional source of funds.

By summer, much of the grading was completed and the first "play" on the new nine was the infamous "Dirt and Divot" tournament staged by **Norm Campbell**. The "holes" were 10 foot diameter chalked circles, and each player carried a foot square piece of carpet on which to tee his ball. KMPC disc-jockey **Dick Whittinghill** played in the tournament and gave us much on-the-air publicity.

Carefully planned schedules of grading and planting resulted in always having some golf holes to play, although we were limited to 6 holes in play for several months.

By October of 1972, all of the course had been planted and touches of green were showing everywhere. To commemorate the progress, the Imperial Bank hosted a cocktail party on the new 13th tee, affording a spectacular view of the new backside. Bank officials, city dignitaries and members were carted to the site to attend the celebration.

Finally, early in March, Green Superintendent **Bill Gallegos** determined that the new grass was ready for play and 18 holes

were commissioned. On opening day, **Gene Parana** shot a great 71, followed by **John Cartwright's** course record 68. **Sally Jones** set the women's record with a 82.

The first men's tournament was held March 10th and won by Dr. **Joe Lenihan** and **Bob Courtney** with a net BB 58. **Bob Adams** and **Dave Kim** prevailed for a gross BB 68.

#### JOHN CARTWRIGHT'S COURSE RECORD 69

Just 15 months after signing the property lease, Rolling Hills Country Club had 18 full holes in play!



RADIO KMPC'S DISK JOCKY **DICK WHITTINGHILL** EYES A TOUGH LIE IN THE 1972 "DIRT AND DIVOT" TOURNAMENT.

Commensurate with **Ted Robinson's** theory that "it takes 20 years to build a golf course", Rolling Hills has certainly been a living testimonial to his statement.

Every tee except No. 7 has been rebuilt or extended in a seemingly constant effort to add yardage to the golf course or to enlarge the teeing ground. The original course layout was under 6000 yards, and now the back tees measure 6081 yards with an eye toward another small stretch when a new 5th. tee is built.

Our first fleet of golf carts consisted of 17 new carts of 6 different types, leased in March of 1970. This was accomplished to evaluate performance of the various makes on our hilly terrain. Our fleet has now grown to 80 carts which are maintained in top condition by buying 15 new carts each year and trading in the 15 oldest.

Of course, the arrival of the carts dictated the beginning of an on-going project to install and maintain cart paths.

The first asphalt paths were installed in 1970 and paths covering each hole were finished in 1975. The asphalt requires constant maintenance from erosion and tree root displacements. Several of the ageing paths have been replaced in recent years with concrete paths, but they too require patching and upgrading.

The thousands of trees on our beautiful course are taken for granted, but virtually every one of them was planted and nurtured by our greenskeepers. The extensive grading and earth moving required during course construction precluded saving natural growth on the land. About the only existing trees saved are the eucalyptus lining P.V. Drive East, the eucs between the 3rd and 18th fair-



**GINGER MAGARO** CHECKS A FALLEN TREE AFTER THE TORNADO OF 1982.

ways, and the one "weed-tree" in the center of the 9th fairway.

The quest for trees on a very limited budget was supplemented by a call for member donations of trees. Engraved plaques were placed on the new trees, crediting the member who donated them. For many years, the members were encouraged to purchase living Christmas trees, then donate them to the Club. Hence, many of the stately pines today once stood in a member's living room, decorated in the Christmas fashion.

In the 1970's, **George Graziadio** donated 55 Purple Plum trees in commemoration of **Reva's** 55th birthday.

From the very beginning, much of our constant floral beauty is attributed to **Bill and Dick Mertz**, owners of American Plant Growers.

#### IN NOVEMBER OF 1982 A TORNADO ROARED THRU THE CLUB

In November of 1982, a tornado roared thru the Club, knocking down more than 220 trees. PV Drive East was totally blocked to traffic by the fallen Eucs. Green Superintendent **Jim Neal** received a City commendation after he and his crew, armed with chain saws, cleared the drive so emergency vehicles could pass. Additionally, a sincere "Thank You" was received from Dapplegray school after our crews cleared their blocked entryway, allowing parents to pickup students trapped after the big blow.

The destruction on the course was devastating, prompting the Board to vote a \$100 per member assessment to purchase and plant replacement trees. However, that assessment was later reduced to \$50 and finally rescinded after a course tour by **Ted Robinson** resulted in a judgement that we had enough trees.



STRUCTURES

As the new course matured, it required more and more maintenance, and at every turn, additional equipment was needed. Tractors, mowers, trucks and dozens of specialized machines were required, but it was a struggle to procure them on the limited budget available.



GREENSKEEPERS AT WORK.

Other "fine tuning" of the golf course thru the years has been an on-going program to control water run-off. Underground "French drains" have been added at many locations. The 15th green was built directly on top of an artesian well that was supposedly capped off, but water continued to flow out of the ground. It took several years and a number of different schemes to finally solve the problem.

A sump to salvage run-off waters was added below the 14th green, with these waters being then pumped to the reservoir on 5. Many improvements in drainage have been instituted thru the years, yet we still suffer some damage with a heavy rainfall, primarily on the 10th and 18th fairways.

There have been some relatively major changes in the course layout thru the years. Older members will remember when the lake on the dog-leg of 14 was removed and replaced by the

present mound in 1975, and the construction of the water hazard across 14 in 1976. The lake to the left of the 17th green was filled and planted in 1978.

And did you know that the practice green at left of the second tee is our oldest green, actually a holdover that was the No. 2 green on the 3-par course!

The third green, a hold-over green from the "Double-nine", was redesigned and totally replaced in 1977.

Burr clover and weed control is a never-ending task. The Golf Course Superintendents Association of Southern California concluded years ago that eradication of the obnoxious Kikuyu grass was an impossibility, but keeping



THE LAKE ON THE FIFTH TEE WILL BE ENLARGED AND THE WATER TANK REMOVED

it contained and out of the greens requires constant attention from our greens-keepers.

The traditional Palos Verdes 3-rail fencing was added along P.V.

Drive East in 1986, and much of the chain-link perimeter fencing was replaced in 1989.

THE LAKE ON THE DOGLEG OF 14 WAS REMOVED AND FILLED

While it may take 20 years to "make" a golf course, the maintenance, repairs and reconstruction goes on to eternity. For example, up-coming projects now include razing the water tank on the 5th tee and reconstructing the tee itself. The lake on 5 is in poor repair, and will be rebuilt, and enlarged toward the 16th fairway to gain the water storage that will be lost when the tank comes down. Hole number 16 will then have a lateral water hazard "in play".

Our sprinkler system is ageing, and will require at least partial replacement soon.

So be it. The "fine tuning" never ends.

As the golf course expanded and matured and more memberships were sold, the need for additional structures and facilities was ever present. No sooner than an addition was constructed, yet another was desired.

The first office/clubhouse was a construction trailer placed on the site of the "3 par" first hole. In 1966 the trailer was replaced by the diminutive little clubhouse (later to be the pro shop). It could accommodate perhaps 40 persons, standing, elbow to elbow, and our early parties there flowed out to the wood decked patio and the first tee beside the lake.

The need for a larger clubhouse was obvious, and the Board engaged architect Pat DeRosa to draw up tentative plans for the new building. After much massaging of the plans and the extended hearings for permits, \$260,000 was budgeted and ground was broken in June of 1969.

A year later, (after a 78 day delay

JUNE 6, 1970 MARKED THE OPENING OF THE NEW CLUBHOUSE

due to a plumbers strike) June 6, 1970, marked the opening of the new clubhouse and the members reveled in its' splendor. Imagine that we actually had a bar, a kitchen, men's and women's locker rooms with showers and saunas, and a real dining room!

Pat Chartrand's pro shop was moved to the bottom floor of the new Clubhouse, and the original pro shop was converted to account-

ing offices.

A near disaster was averted in October of 1970 when a kitchen



JIM ADAMS INSPECTS THE DAMAGES AFTER AN OVEN BURNED THRU THE FLOOR IN THE NEW KITCHEN (1970)

oven burned thru the floor, sending ashes and debris into the ladies' locker room below, but luckily the new building did not go up in flames.

The evolution of the Clubhouse was a never ending process. At least 3 major kitchen expansion plans were proposed but none instituted. Instead, many mini-modifications were made in the culinary areas with freezers, refrigerators, ice-makers and kitchen equipment added in bits and pieces.

In 1976, there was a proposal to expand the clubhouse to the South, adding 2000 square feet to both upper and lower levels, but that plan was ultimately scrapped.

The last major Clubhouse re-

model was in late 1977 when the upstairs lounge was pushed out to the outside columns, the area totally remodeled and re-furnished. At the same time, the front entry-way was added and offices expanded. The accounting staff moved back downstairs and the pro shop moved back to the original pro shop, now expanded and with bag storage area added. The vacated pro shop downstairs was converted into the men's card room and lounge.

A 1979 proposal to significantly enlarge the clubhouse developed to the stage of drawings and artist conceptions, but was narrowly



MEMBERS CELEBRATE THE GRAND OPENING OF THEIR \$260,000 CLUBHOUSE IN JUNE OF 1970

voted down by the members at the annual meeting in January of 1980.

While the main clubhouse amenities are most visible to the members, many other less prominent structures have been added over the years.

The plan from the inception of the Club was to include a swimming



## CHAPTER EIGHT

### NEW CONSTRUCTION

In April of 1986, after the apparent demise of the proposed CAYMAN/CHANDLER development of the filled gravel pit, some 10 years downstream, there was a mixed member reaction.

Many members were discouraged that the grandiose plans for a brand new championship 18 holes, complete with new clubhouse, tennis complex, driving range and totally NEW facilities were scrapped.

But others were pleased! Some just expressed their LOVE for our existing golf course, now mature. Others resented the prospect of playing fairways lined by homes along all of the holes, a'la Palm Springs. Where would the peacocks, squirrels, 'possums and skunks go? How could you tee it up without the neigh of a horse or the bray of a donkey punctuating your backswing? Surely, much of the Rolling Hills traditional charm would be lost.

The existing golf course was to be retained, but the inadequacies of our other facilities were pointedly apparent. The Board acted swiftly, now that the "dream" project was shelved. They formed a new Club Development Committee and appointed **Dr. Mel Rowan** as Chairman. In July of 1986, he said,

"It is time now to address NEAR TERM Club Development!"

Early in 1987, the architectural firm of **Johannes Van Tilburg and Partners** was retained to



THE COMMEMORATIVE GROUND BREAKING IN JULY OF 1988. PICTURED ARE DICK ETTINGTON, BILL CHRISTOFERS, JIM HENRY, BILL DELANEY, ELDON MANGOLD, HOWARD FJELLSTROM, PAUL ANGELICH, DR. MEL ROWAN, BRYAN BAHMAN, BILL STEINMETZ, BERT LARSON AND JOHN CARTWRIGHT.

develop space studies and preliminary design concepts.

The conceptual plans and costs were presented at a general membership meeting and on March 10th, the members voted overwhelmingly to proceed with final plans and approved a \$6000 assessment to finance the construction.

#### TIME NOW TO ADDRESS NEAR TERM CLUB DEVELOPMENT

In the ensuing 16 months the working drawings were finished and the processes of variances and building permits with the City Planning Commission were completed after many, many meetings and hearings.

Members contributing their time and knowledge on the Club Development Committee, included Chairman **Rowan**, **Bill Steinmetz**, **Dick Ettington**, **Burt Larson**, **Joe Ferderber**, **John Cartwright**, **Dan Sasahara**, **Howard Fjellstrom**, **Sam Angelich**, **Jim Beecher**, **Harry Kim**, **Maury Nardone**, **Don Bradfield** and **Bill Delaney**.

The construction contract was awarded to **Henry Construction Co.** on July 2, 1988.

Finally, after two years of developing plans, City hearings and procedural frustrations, building permits were issued. July of 1988 brought the commemorative ground-breaking and the start of the massive project.

gifts were not recorded.

But, for example, the refrigerated water fountains at the 6th and 14th tees were originally donated by **George Graziadio** and **Harold Mattice** respectively.

A year or so later, **Ted Magaro** constructed the canopies to shade the fountains.

The maintenance shed behind the 14th green was added in October of 1973.



THE MAINTENANCE BARN BEHIND THE 14TH GREEN.

June of 1976 brought the dedication of 4 tennis courts which were planned and constructed under the guidance of then Tennis Chairman **Don Bowker**. The tennis house and toilets were added later in 1983

The additional on-course toilets between 6 and 15 were operational in December of 1980. An assessment this year of \$531 was used for additional pro shop expansion and air conditioning repairs.

Tee markers, yardage indicators and other "little" improvements have constantly improved our fine facility, but nonetheless have required a great amount of work and diligence by the various functioning Committees.

For example, **Norm Campbell** and **Jerry Redman** measured and installed yardage markers on sprin-

kler heads in 1986. New SCGA red white and blue yardage markers in the fairways were added in 1988.

Although plans for a new Clubhouse were pending, The Board elected to do a major renovation late in 1986, which included new furnishings, carpets and extensive remodeling of the lounge and main dining room. All dining tables and chairs were replaced at that time.

Maintenance and updating of our Club facilities is a never ending task.



THE TUNNEL UNDER P.V. DRIVE WAS THE FIRST CART BARN.



PRESIDENT **BUD HEBSON** CUTS THE CEREMONIAL RIBBON OPENING THE FOUR NEW TENNIS COURTS FOR PLAY ON MAY 1ST., 1976. TENNIS PROFESSIONAL **CARL THOMPSON** AND TENNIS CHAIRMAN **DON BOWKER** LOOK ON.

WHAT A GREAT PLACE TO HAVE A PICNIC! THE HALFWAY HOUSE WAS BUILT IN LATE 1974 AND DEDICATED IN JANUARY OF 1975.

pool, and the Board approved construction in July of 1971 amid some controversy. The order was rescinded later that year when the members voted overwhelmingly against the pool.

The tunnel under PV Drive was completed in July of 1970 and doubled as our first cart barn until the new barn accommodating 64 carts was completed in October, 1975. The new barn, North of the Proshop, (contracted by **Don Wolf**) was financed thru a \$400 membership assessment. Part of the assessment also paid for pro shop expansion, the men's card room, paint and carpet replacements and additional air conditioning.

The Halfway house was commissioned in January of 1975 and was financed largely thru proceeds from art auctions and individual membership contributions.

#### THE HALFWAY HOUSE WAS COMMISSIONED IN JANUARY OF 1975

How would you like to play 18 holes on a hot summer day without a half-way house, toilets or a drinking fountain?

Early members did, and those members responded with generous gifts. Member contributions thru the years have been monumental, too numerous to mention and many



PROSHOP DEMOLITION UNDERWAY



THE TWO LEVEL PARKING STRUCTURE WAS COMPLETED FIRST

A big bulldozer slashed it's massive blade into the pro shop and demolition was underway! The pro shop contents had been moved to a temporary proshop in

**A BIG BULLDOZER SLASHED ITS' MASSIVE BLADE INTO THE PRO SHOP**

three mobile units erected on the first tee. Golf cart storage and maintenance were moved to the No. 1 and 2 tennis courts.



WAITER CHRIS ATTENDS TO BOB AND JEANNE FOX



HELLEN AND BOB JENNINGS, JEAN COURSEN AND FRANCIS WYATT, JIM AND DELPHINE HAWTHORNE (STANDING)



PAT CHARTRAND AND FAMILY ENJOY THE "LAST SUPPER"



FOOD AND BEVERAGE MANAGER BOB SPARKS OVERSEES THE "LAST SUPPER"



JANET AND CHARLIE JORDAN, RON AND BARB RUFFALO ARE ATTENDED BY MINA.

In short order, the pro shop and cart barn disappeared and excavation began for the underground parking structure that would ultimately provide 55 parking stalls underground and another 60 stalls on the surface level, parking for 116 cars in all. Including the West parking lot, we would

have accomodations for 258 cars, an increase of 35%

The first new structure rushed to early completion in February, 1989, was the ultimate new pro shop sitting beside the first tee on the East end of the parking structure. This structure was to



THREE MOBILE UNITS SERVED AS THE TEMPORARY PRO SHOP

serve as our temporary Clubhouse during the rest of the construction period.

On Friday night, February 10th, the "Last Supper" was held in the old clubhouse bar area as the dining room was already being demolished. This was to be the final event, and the clubhouse was closed the next day. Men's and Women's temporary locker rooms were set up in the lower level of the parking structure, as was a temporary card room.

The transition from the old clubhouse to temporary quarters was an amazingly smooth operation, thanks to impeccable planning and scheduling largely engineered by Secretary Dick Ettington and General Manager Bryan Bahman.

In March the temporary clubhouse was opened for food and beverage service and the members marveled at the quality of food and beverage services maintained thruout this construction period, without any conventional kitchen

**IN MARCH THE TEMPORARY CLUBHOUSE WAS OPENED**

facilities. Lunch service was always available with limited

menus, and dozens of dinner parties staged with most of the cooking done on outdoor bar-b-ques! A great testimonial to the innovative Bryan Bahman and Bob Sparks

in one of the 15 recently purchased new carts.

Blessings were counted though, as the downstairs temporary lockers, food refrigeration areas



THE NEW PRO SHOP (TEMPORARY CLUBHOUSE) WAS RUSHED TO COMPLETION.

The golf carts were moved back inside to the new underground "cart barn" on the South end of the parking structure and our personnel marveled at the splendor of the new facility. The carts were neatly arranged in rows allowing access to any cart with the chargers overhead and out of the way.

There was a built-in wash rack where the carts entered the barn, mechanics repair area, and a secure room for parts and supplies. How grand it was!

THEN DISASTER STRUCK! Just before midnight on August 27, fire broke out in the cart barn and all 80 carts were consumed or heavily damaged before the Fire Department could bring it under control. Fire Inspectors believed that the conflagration may have started in a faulty charging circuit

and the Pro Shop didn't burn, albeit all suffered smoke damage.

Our Board and Management teams responded to the disaster immediately and objectively.

**AN OVERHEAD SPRINKLER SYSTEM WAS ADDED**

Everything was cleaned and repainted in just a few days, rental gas carts were brought in, and some degree of normalcy was established, although it took some 6 weeks to clean, restore and re-wire the cart barn. Needless to say, an overhead sprinkler system was added!



JUST ONE OF 80 DAMAGED CARTS

Construction on the new Clubhouse continued at a seemingly snails pace. The "Grand Opening" dedication party had been scheduled for the end of October, with other social functions on calendar early in November. Would it be ready?

Jim Neal's crew prepared the bedrock foundation and sodded



THE NEW PRACTICE PUTTING GREEN IS SODDED.

the new practice putting green in mid-September. Some 6000 square feet of quality green sod was purchased from the Virginia Country Club "green farm". The new green, 7500 square feet and over twice the area of the one it replaced, was amazingly ready for play in only 4 weeks!

Generous members were to be thanked for substantial donations of time, money and equipment. John Robertson donated the use of a big skip loader to move some 700 tons of foundation materials. Bill and Dick Mertz, as usual, contributed bedding plants for the periphery, and totally donated the retaining wall around the green.

By September's end, the Clubhouse had it's exterior painted, the roof tiles installed and was really beginning to look like a Clubhouse, although much of the time consuming interior finish work remained to be completed.

In early October, invitations were mailed to members, city officials and dignitaries to attend the "opening and inauguration" of the new Clubhouse on October 25, 1989. Commensurate with the mailing, all of the contracting teams, including carpenters, painters, electricians and candlestick makers were given MUST DO deadlines to complete their work!



NEW CLUBHOUSE NEARS COMPLETION



CONSTRUCTION UNDERWAY BEFORE THE OLD CUPULA IS REMOVED.

CONSTRUCTION ADVANCES.



PRACTICE PUTTING GREEN



## CHAPTER NINE

### REALIZATION - OCTOBER, 1989

True to forecast, the new Clubhouse Inauguration Party was held on Wednesday evening, October 25th, 5:00 to 8:00 P.M.!



Over 425 people attended, including City Dignitaries, and many of the contractors and representatives of L.A. County Fire and L.A. Sheriffs Departments, many members and past members including founder Omer Tingle and architect Ted Robinson,

Guided tours of the new facilities were conducted, and the members marveled at the

spaciousness of their new Clubhouse. The Daily Breeze described the new facility as "— a cross between a clean-lined Spanish hacienda and a swank Palm Desert resort." For the first, and perhaps the last time, the Men's and Women's Locker Rooms were open to all.



THE ORIGINAL THREE OF ROLLING HILLS COUNTRY CLUB ARE REUNITED: OMER TINGLE, TED ROBINSON AND PAT CHARTRAND.



An abundant spread of delicious hors d'oeuvres was presented by **Chef Kevin** and the bubbly flowed freely.

An "Appreciation Ceremony" was conducted during the course of the evening, with plaudits extended to so many who contributed so much during the planning and construction phases.

**Dr. Mel Rowan** was thanked for his tremendous involvement in charge of the project and he was applauded heartily when he took the podium. He, in turn, thanked everyone for their part, from architects to contractors to interior decorators. Then the many members who contributed were individually acknowledged.

A gracious welcoming of the new facilities to the city and the community was given by Rolling Hills Estates Mayor **Nell Mirels**.

Let's take a look at the new additions:

**PARKING STRUCTURE:** The first structure completed during the carefully scheduled construction cycle was the 345 foot long two-level parking garage accommodating 115 cars in all, 55 stalls are underground. The south end of the underground area accommodates 80 cart charging stations, a cart wash rack, mechanics' shop and secure spare parts storage area. A ramp from the



THE PRO SHOP SITS NORTH OF THE CENTRAL PLAZA CART STAGING AREA.



THE NEW PRO SHOP IS A SPACIOUS 3200 SQUARE FEET AND PRESENTS A CHEERY ATMOSPHERE WITH ITS' ABUNDANCE OF WINDOWS.

cart barn up to the Central Plaza provides cart access to the first tee.

**PRO SHOP:** The new Pro Shop is bright and airy with its high gabled ceiling and sky-

lights. The shop consists of 3200 square feet in all, including a bag storage area of 400 feet to allow storage of 412 bags. Two offices, two dressing rooms and rest rooms supplement the 1400 square feet of merchandising area. The golf starter's desk is immediately adjacent to the first tee and affords an excellent view down the first fairway thru the protruding window provided.

**CLUBHOUSE:** The Clubhouse was designed on three levels comprised of 25,847 square feet in all, over twice the footage of its' predecessor. The "old" lounge and bar area was retained largely intact. Other than that one area, everything else is either new or so grossly remodeled as to be unrecognizable.

**ENTRY LEVEL:** Egress from the street-side entry drive (and limited parking lot) is thru two separate areas, one, essentially

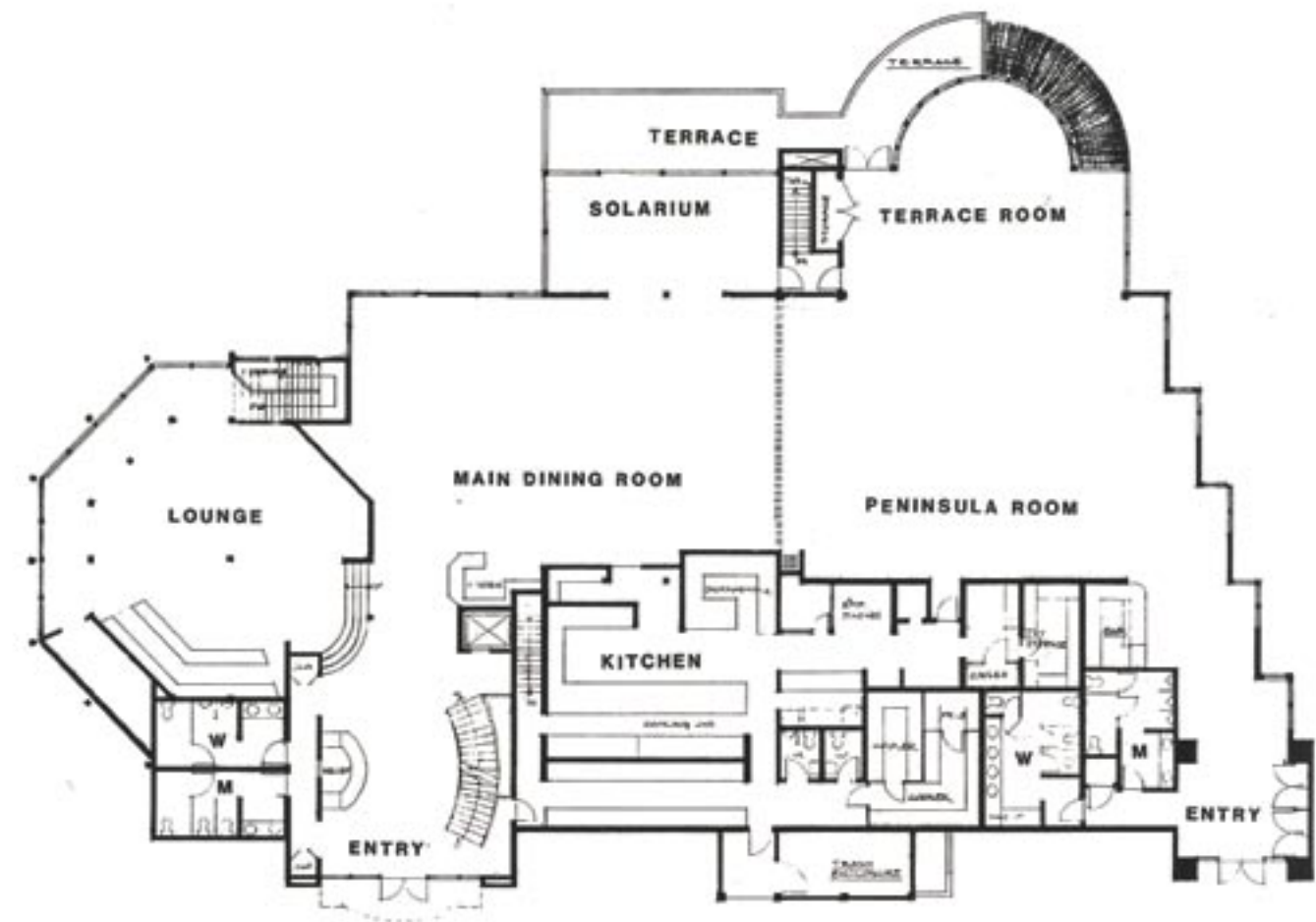


THE "OLD" LOUNGE REMAINED LARGELY INTACT.

where the old entry was on the North end, and a new banquet entry on the South end. This arrangement will permit members entry on the North, and special event or banquet access on the South, such that guests can enter the banquet area without co-mingling with the members.



THE MEMBER ENTRY IS ON THE NORTH END



ENTRY LEVEL FLOOR PLAN

On entrance thru the member lobby, one encounters a large foyer, a grand circular stairway to the upper and lower levels, and elevator service to the bottom floor. Passing thru the foyer, turn left and four steps up to the "old" lounge.

Or, turn right into the Main Dining Room and the Peninsula Room, 109 x 36 feet, or nearly 4000 square feet of dining area, a comfortable space for over 330 persons at a formal banquet. These rooms can be divided with a pull-across



NEARLY 4000 SQUARE FEET OF DINING AREA



THE TERRACE ROOM IS ABOVE THE MEN'S LOUNGE



THE NORTH END WITH THE "OLD" LOUNGE ABOVE AND THE LADIES' LOUNGE AND LOCKER ROOMS BELOW.

The ladies' area consists of a lounge, showers and 154 lockers.

The men's locker rooms contain 274 full lockers, 152 half lockers, 43 guest lockers, sauna and 6 showers. A locker room attendant's station is at one entrance to the men's locker room and adjacent to the ladies' locker room.



A PEEK INTO THE NEW MODERN KITCHEN

a reception desk, cloak room and adjacent rest rooms, and then into the Peninsula dining room.

The new modern and spacious kitchen, with virtually all new equipment, sits behind the dining rooms on the West side of the building.

**LOWER LEVEL:** The ground level is entered from the Central Plaza into the spacious men's and women's locker rooms.

There is also a trophy display lobby and Food and Beverage Manager's office on this level.

Looking over the putting



THE MEN'S LOUNGE

amenities as a chalk board and a built in pull-down projection screen.

The upstairs area also contains offices for the General Manager, Secretary and accounting functions.

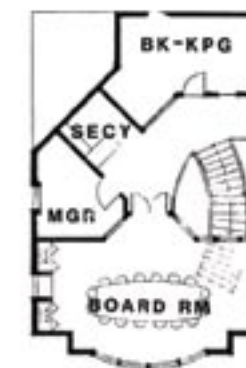
**CENTRAL PLAZA:** The large Central Plaza is approximately 8000 square feet of stone-textured, multi-colored concrete. This large Plaza will be used for cart staging of shotgun tournaments as well as normal cart traffic to and from



LOWER FLOOR PLAN

green is a semicircular Men's Lounge and a Mixed Grill dining area with its own bar and mini-kitchen, providing dining for approximately 30 people.

**UPPER LEVEL:** From the member foyer, a curved staircase ascends to the Board Room that was provided for meetings, lunches or dinners for groups up to 16 people. A wet bar is included in the Board Room, along with such meeting



UPSTAIRS FLOOR PLAN

the tunnel under Palos Verdes Drive East.

**PRACTICE RANGE:** Our already short Practice Range has been shortened even more allowing shots of about 135 yards maximum. Nonetheless, it is a popular area for pre-golf warm-ups, lessons and practice.

**PUTTING GREEN:** The new practice green is over twice as large as the one it replaced. It is comprised of over 7500

square feet and in the Rolling Hills tradition, it is two tiered, allowing the members to practice those big "curlers" that they find on the golf course.



LOCKERS, LOCKERS, EVERYWHERE. 623 IN TOTAL

### SUMMARY:

So be it! Three years, three months and 11 days after **Dr. Mel Rowan** took charge of the Club Development Committee and said,

"It's time now to address NEAR TERM Club Development", the project is finished.

The members have moved in to their new locker rooms, and have not shed a tear over giving up the plastic plates and cups from the "Temporary Clubhouse" era.

The limited menus are a thing of the past, and the members now enjoy a full selection of foods prepared by our staff in their wonderful new kitchen. And all are served on genuine china and glass, once again.

It has been a proud experience and a gratifying end to an ambitious project!



THE BOARD OF DIRECTORS CONVENES IN THE NEW BOARD ROOM. (LEFT TO RIGHT SEATED:) JOHN HENNEKAM, AL AYOIAN, HAP L'HEUREUX, BILL CHRISTOFFERS, (STANDING:) MAURY NARDONE, DICK ETTINGTON, BILL DELANEY, DON BRADFIELD, DAN SASAHARA AND BRYAN BAHMAN

Rolling Hills Estates historians may be interested in an incredible coincidence of dates in local and world events.

On August 13, 1961, our founder, **Omer Tingle**, was negotiating for a land swap deal to procure the "Eastside" property. That same date in history, construction commenced on the infamous Berlin Wall, 110 miles long, dividing East and West Germany.

Twenty eight years later, on October 25, 1989, the new Rolling Hills Country Club facilities were dedicated. Just 12 days following, November 9th, 1989, the Berlin Wall was symbolically torn down.

Different kinds of advances for unrelated people on two sides of the Atlantic in exactly the same time frame!



THE NEW LADIES' LOUNGE IS BRIGHT AND COLORFUL.



THE NEW BAR IN THE BANQUET ROOM.

The joy of the Clubhouse opening brought out the joy of giving from a couple of our generous members.

**George and Reva Graziadio** presented the Club with a sparkling new Wurlitzer piano that now adorns the dining room, complete with a brown leatherette cover to protect the delicately finished wood grain.

**Masakazu Honma**, President of Hitachi Consumer Products of America, donated not one, but two, color television sets, one for the mixed grill and one for the ladies' locker room.



## CHAPTER TEN

### THE GOLF COURSE TODAY



AERIAL VIEW OF THE FIRST GREEN.



A PASTORAL SCENE GREETES THE PLAYERS AS THEY APPROACH NO. 11.

“It takes 20 years to make a golf course!”, our world renowned Golf Course Architect, **Ted Robinson**, has often stated.

The Rolling Hills Country Club opened the second nine and achieved full 18 hole status in March of 1973, some 17 years ago, so it would seem (according to **Ted’s** projection) that we are very close to having a “made” golf course!

Indeed, our fairways are mature, our greens are lush, and over 3000 trees, Eucalyptus, Pines, Myroporum and other species align our fairways.

Of course, true to the forecast, those 17 years have seen a great evolution on the way to perfecting the original fine design into a mature GREAT golf course. New tees have been added, fairways re-contoured, sprinklers relocated, water drainage management refined, trees planted and trees removed and even lakes added and lakes removed! These are all parts of the 20 year maturation that **Ted** refers to, and it doesn’t stop at 20 years.

#### A MATURE GREAT GOLF COURSE

It is an on-going program of sprinkler maintenance, turf control, disease and pest management, water reclamation and a host of other challenges that confront our Staff daily.

Our lush, green, vibrant and beautiful golf course attests to the skill and devotion of that Staff, managed by Golf Course



GREENKEEPER FELIX MEZA AT WORK.

Superintendent, **Jim Neal**. Jim came to RHCC in December of 1980 with then 9 years of golf course experience to supplement his studies in agronomy at the University of Montana.

And plaudits are due to the many members thru the years who have devoted endless hours of service to the Green Committee. Especially such long term devotees as **Dr. Lloyd Jones**, **Art Gardner**, **Norm Campbell** and **Maury Nardone**, current Chairman.

The expertise of all these people, from **Ted Robinson** to the individual greenskeeper has resulted in one of California’s finest golf facilities. Our 6000 plus yards of rolling fairways require precise shot placements and

the need to use every club in the bag. Our finely manicured greens putt true, and are always a test to the golfer wielding the flat stick.

The sheer beauty and elegance of our Golf Course is illustrated on the following pages with a hole-by-hole diagram, description and photograph.

DR. LLOYD JONES



ART GARDNER

NORM CAMPBELL



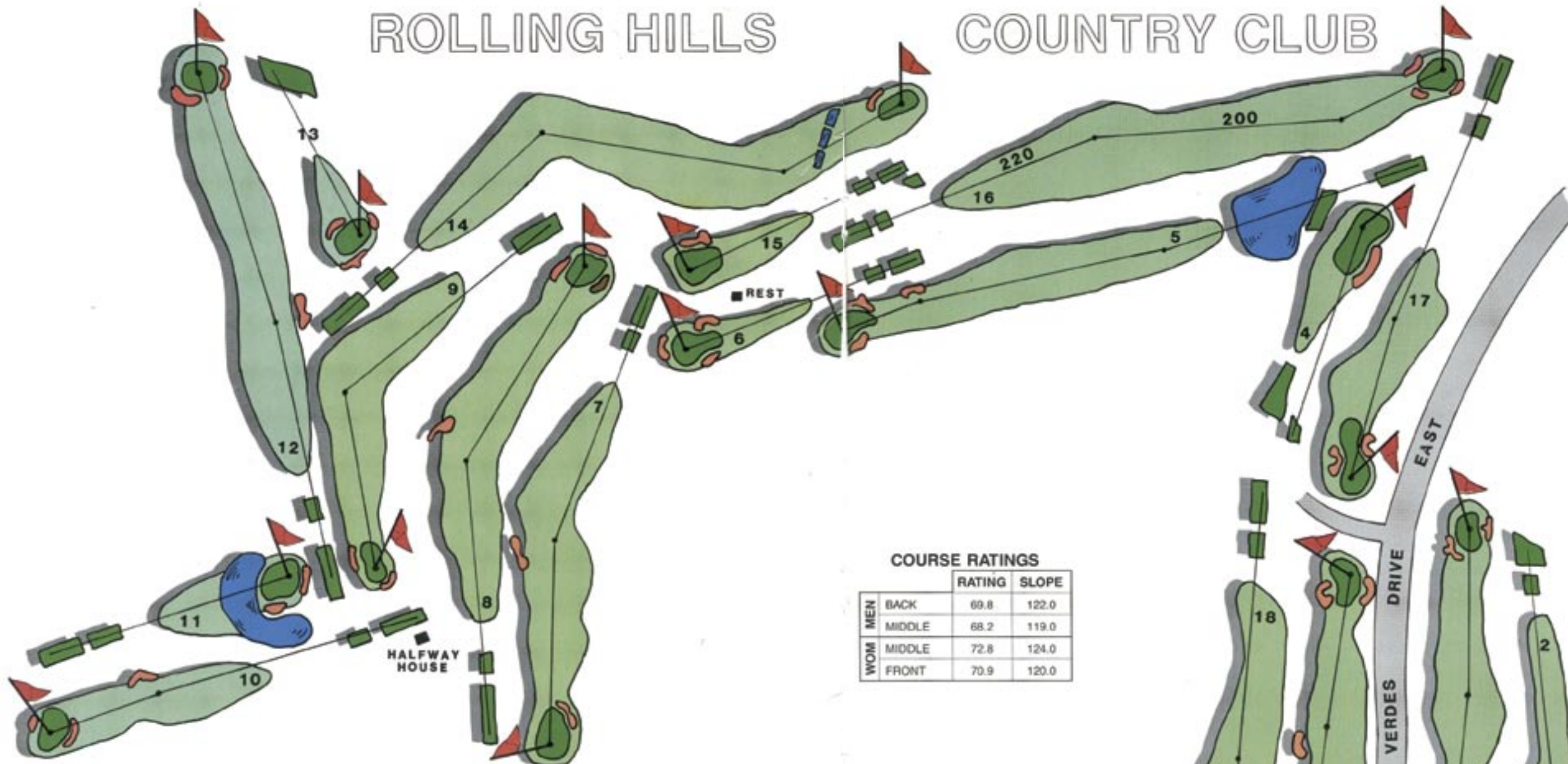
MAURY NARDONE,  
GREEN CHAIRMAN

The solid arrows on the hole diagram are a “You Are Here” marker, showing the camera position for the photo. (“Open Arrows” are the camera position of inset views) We are deeply indebted to our truly professional photographer, **Jim Giacalone**, for his untold hours of devotion in producing the stunning photographs.

FOOTNOTE: 8 x 10 color enlargements may be ordered from the office.

# ROLLING HILLS

# COUNTRY CLUB



**COURSE RATINGS**

		RATING	SLOPE
MEN	BACK	69.8	122.0
	MIDDLE	68.2	119.0
WOM	MIDDLE	72.8	124.0
	FRONT	70.9	120.0

**OUT**

HOLE	1	2	3	4	5	6	7	8	9	OUT
PAR	4	4	4	3	5	3	4	4	4	35
BACK TEE	363	337	355	183	487	211	370	414	350	3070
MIDDLE TEE	337	332	344	164	459	190	354	397	341	2908
HANDICAP	15	9	13	5	17	7	3	1	11	
FRONT TEE	320	317	330	146	410	170	340	378	326	2737
MIDDLE TEE	337	332	344	164	459	190	354	397	341	2908
HANDICAP	11	5	9	17	13	15	3	1	7	

**IN**

HOLE	10	11	12	13	14	15	16	17	18	IN	TOT
PAR	4	3	4	3	5	3	5	4	4	35	70
BACK TEE	325	181	426	172	515	193	505	324	370	3011	6081
MIDDLE TEE	311	154	416	157	487	172	499	306	356	2658	5766
HANDICAP	16	8	2	18	4	12	10	14	6		
FRONT TEE	282	140	367	144	469	153	494	280	343	2672	5409
MIDDLE TEE	311	154	416	157	487	172	499	306	356	2658	5766
HANDICAP	12	14	2	18	8	16	4	10	6		



## THE NAME OF THE GAME IS

### GOLF!

**B**e you a PGA Professional, a scratch player, a low, middle or high handicapper, a 40-plus, a man, woman or child — it's **GOLF!**

The **GAME** is unique among all of the sports —

**BECAUSE** it is largely an individual competition and it doesn't require a team.

**BECAUSE** it can be participated in and enjoyed thru mature and older years.

**BECAUSE** of the handicap system

that permits fair competition, head on head, for all levels of players.

**BECAUSE** no other sport is played in such a gorgeous arena — plush green grass, the flora and fauna, under blue skies.

**BECAUSE** it *is* exercise and healthful, whether you walk or ride,

**BECAUSE** (no matter what your skill level) you can always say:

"I would have shot a \_\_\_ if I hadn't 3 putted the 18th hole!"

**R**olling Hills Country Club members can enjoy their golf in serenity on our magnificent grounds. Or, if friendly competition is the goal, it is available here.

There are regular monthly and annual tournament competitions to supplement your private group games and pickup rounds.

**MEN:** Regular tournaments include the Monthly "Men's Day" (Usually the last Thursday of each month); the President's Cup; the gala 54 hole Member-Guest Invitational with its' final day Derby traditionally officiated by the knickered **Norm Campbell**; Club Championships; Senior Championship; the Board of Directors Invitational; SCGA Team Play, and many others.

It has been rumored (unconfirmed) that on remote occasions, a tuppence has been wagered on the outcome of some events!

**WOMEN:** Tuesdays are known as Lady's Day, with weekly tournaments of varied formats. Of course the Women's Club hosts several Member-Guest competitions each year, including the elaborate Spring Event and the Fall Event. Their Christmas "Kris Kringle" tournament is a favorite.

They field a team in the WSCGA Team Play competitions and of course have their yearly Club Championships and other tournaments.

**JUNIORS:** Commensurate with **Omer's** originally announced intentions to encourage Junior Golf programs, a bountiful schedule is presented. Junior Championships, Parent-Junior tournaments, clinics and group lessons are regular events.

**MIXED COUPLES:** Lot's of opportunities here! (See Chapter 11, "SOCIAL-ability")

**FUN GAMES:** At RHCC, we play a lot of "sterile golf" in strict accordance with the Rules Book, cover to cover. But then, on occasion, there are some laughers, like string tournaments, mulligan buy-ins, Lady Bug (designated Ball). and whatever fantasies that can be dreamed up by the appointed event chairman.

It is not unusual to find 12 inch diameter cups, 5 flag greens, or a new Chevrolet, Toyota or Ford automobile parked on a 3-par hole, waiting to be claimed for a hole-in-one! (Courtesy of **Marty Jacobs, Yukitasu Togo, or Peyton Cramer**, respectively)

**NON-AFFECTIONADOS:** There are those who poo-poo our love - they say,

"How tough can it be, hitting a stationary ball perched on a wooden peg, with no opponent to block your shot or knock you off your cleats?"

To those un-indoctrinated critics, we reply:

"Why don't **YOU** try it!"



**GOLF LEGEND GENE SARAZEN ENJOYED RHCC WITH HAL SPOTTS**

**Y**our Editor had the distinct pleasure of personally knowing an extremely talented vocalist, actor, and scratch golfer, Mr. **Bing Crosby**. **Bing** told me (and the whole world!) that when it came to his ultimate demise, he hoped it would occur at the arena he loved most — on a golf course.

**Bing** received his wish when he was stricken while playing golf in Spain.

At RHCC, we've witnessed fellow members who've followed **Bing's** expressed desire. **Hal Spotts, George Beard, Bob Webster** and **Aaron Rosenberg** were stricken while pursuing their favorite recreation.

God rest their souls on the peaceful green fairways behind the pearly gates. One day we'll join them for a dollar Nassau.

**M**any of our ageing members, with distance shrinking and handicaps soaring to unbelievable heights, remember the "use'ta be's".

"I use'ta hit my driver about 280 yards!"

"I use'ta ALWAYS get it up and down in two"

"I use'ta hit my sand wedge 130 yards!"

But we have come to accept the old adage that "The use'ta bees don't bring much honey any more!"

We joke that the game isn't played like it "use'ta be", but it's better to be on top of the green than under the green.

## THE TRANQUIL, PEACEFUL GAME OF GOLF

Rolling Hills members and golf aficionados the world around enjoy the game of GOLF for its many intrigues. Not the least of which are the beautiful, lush, green and serene surroundings at the game site.

An abundance of perfectly maintained turf, manicured greens, surrounded by groves of trees, all creating an environment of exceptional tranquility. Not only for the golfers, but for the cute little quadrupeds and winged flyers that inhabit RHCC.

You may not ordinarily think of skunks as "cute" until you see them traipsing across the practice range at twilight, while you're enjoying a Desert Martini in the lounge.

"Cute", yes, are the tree scampering squirrels, little Red foxes, and the bandit-eyed 'possums. In the air and alit, we have the vociferous Peacocks and hens, Golden Hawks, migrating ducks, squawking crows, darting swallows and of course the "talking" Mourning Doves. ("Hit the ball-I-I") Koi fish proliferate in the lake at 5.

How serene can this be as you play your round?

Then this tranquility is suddenly broken by a resounding scream of — "FORE!"

Instinctively, you turn to look at the source of the call! M'gawd, **DON'T DO THAT! COVER UP!**

"Golf" is a war zone!

Unfortunately, we've had our share of injuries. To recall just a few.

**Chris Lopez** playing at LaCosta found his ball just behind a three inch vertical pipe, marking a water hazard. He chose a 3-wood, his ball hit the pipe, rebounded directly into his forehead leaving a Maxfli impression in his skull! Similarly, **John van der Hulst** hit a curb teeing off on 18 and the ball bounced back, striking him in the head, and knocking him out.

**Don Bathgate** broke his leg when he tested the law of physics that states "two objects cannot occupy the same space at the same time". Only he expanded on the law and introduced **THREE** objects: A golf cart, a tree and his left leg!

Playing partners practice swings have taken their toll on our Pros **Pat** and **Jack** and many others.

**Greta Von Pestel**, **Paula Yates**, and **Jean Stillwell** have been "squeezed" between golf carts, **Marion Parks** drove over the hill on the path going up to 16, **Gene Gregor** was injured when the roof of his cart fell on his head!

Errantly flying golf balls have harmlessly glanced off of many members, and inflicted serious injuries to others, including **Lanni Spotts**, **Evie Mills**, and many others. **Jan Mangold** was shot with a pellet gun on No. 12.

Add a few over-turned golf carts, twisted ankles and legs, slips on concrete cart paths, bee stings and rattlesnake invasions and you ask:

"Wha hopponed" to the gentle game of golf?

HOLE NO. 1

PAR 4

363 YARDS

HDCP. 15



In November of of 1989, PGA Tour Professional Chi-Chi Rodriguez stood on our first tee with Yukiyasu Togo, and looking down the narrow fairway, he exclaimed:

"I can't even putt it THAT straight!"

Sure enough, he hit three drives off the tee, not one in the fairway! Later, he found is first ball in play, parred the hole, and went on to shoot 65 with five birdies and no bogies!



**HOLE NO. 1:** A relatively tight driving hole with O.B. left and abundant trees down the right side, this opening 363 yard hole demands a well placed drive. A long knocker or an errant approach shot short to the right might produce this predicament, where the green is guarded by a picturesque (ugly, if you're behind it!) Olive tree.

**HOLE NO. 2**

**PAR 4**

337 YARDS

HDCP. 9



**HOLE NO. 2:** This hole returns to the Clubhouse, only 335 yards long, this lake to the left of two can catch a long driver, but normally doesn't come into play. Two sand traps guarding the right-front and left side are more apt to snare the approach shot.



THE TEE SHOT IS UP HILL TO THE DOGLEG RIGHT.



**HOLE NO. 3**

**PAR 4**

355 YARDS

HDCP. 13



**HOLE NO. 3:** This view from the tee illustrates the need for a true tee shot on this 355 yard third hole. Groves of eucalyptus trees on both sides are intimidating with O.B. the entire right side. A driving trap is on the left, and two bunkers guard the green.

THIRD GREEN IS GUARDED IN FRONT BY A MASSIVE SAND TRAP.





**HOLE NO. 4**

**PAR 3**

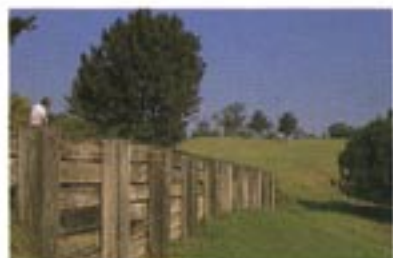
183 YARDS

HDCP. 5

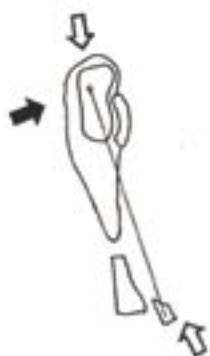


LOOKING FROM THE GREEN BACK TOWARD THE TEE, THE COLORFUL HILLS OF PALOS VERDE ARE RESPLENDENT IN LAVENDER-BLOOMS.

THE LOWER (LONG) TEE IS RETAINED BY RAILROAD TIES AND UNLESS THE PIN IS SET DEAD-FRONT, THE FLAG IS NOT VISIBLE FROM THIS TEE.



**HOLE NO. 4:** The short 183 yard length belies the difficulty of this severely up-hill tricky 3-par which has a jungle to the right and a lake to the left. When the pin is placed on the back of the two-tiered green, only the top of the flag is visible from the tee. Three putts are common here!



**HOLE NO. 5**

**PAR 5**

487 YARDS

HDCP. 17



THE GREEN IS WELL GUARDED.



MIGRATING DUCKS ALWAYS VISIT IN THE WINTERTIME.

**HOLE NO. 5:** The lake in front of the tee on the straight-away 487 yard 5-par shouldn't normally come in to play, but it's surprising how many golf balls are consumed by this giant "ball-washer"! Trees in front of the green and two green-side bunkers demand an almost perfect approach.

211 YARDS

HDCP. 7



**HOLE NO. 6:** A down-hill 3-par of 210 yards nonetheless requires an exacting tee shot to avoid the two bunkers surrounding the green. A ball hit into the swale in front of the green will suck up. The perfect tee shot requires 200 plus yards on the fly, and then an abrupt stop to avoid the back bunker.



THE WATERING HOLE ON THE SIXTH TEE.



WHO SAYS WE DON'T HAVE A FALL SEASON IN SOUTHERN CALIFORNIA?

370 YARDS

HDCP. 3



**HOLE NO. 7:** Only 375 yards, but up-hill and normally up-wind, this difficult dog leg left 4-par has alternated with hole No. 8 as the No. 1 Handicap hole thru the years of several course re-ratings. The approach shot is restricted by trees on both sides and a monster bunker to the left.



THE "LION'S DEN" ON SEVEN CATCHES AN OCCASIONAL TEE SHOT. QUESTION: IF YOUR BALL COMES TO REST 30 FEET INTO THE DRAIN, AND ONLY FIVE FEET UNDERGROUND, WHERE IS YOUR POINT OF "NEAREST RELIEF?"



**HOLE NO. 8:** Currently Handicap No. 1, the 414 yard dog-leg right has the corner guarded by a stand of eucalyptus trees, preventing any corner-cutting. Three bunkers guard the green which is rather severely sloped on the back portions.



THE RIGHT DOGLEG ON THE EIGHTH HOLE HAS THIS GROVE OF EUCALYPTUS TREES TO DISCOURAGE THOSE WHO MIGHT BE INCLINED TO "CUT THE CORNER".



**HOLE NO. 9:** From the tee of the abrupt dog-leg left, the need for careful club selection is obvious. Even medium length drivers can hit it thru the fairway leaving no decent second shot. Trees left and two bunkers demand a precise approach shot on the typical Ted Robinson designed two-tiered green.

**THE "WEED TREE" :**

When grading for the "Double-Nine" was commenced in 1968, the so called "Weed Tree" was carefully preserved as the native chaparral was cleared. It stood in the center of the then 5-14 fairways.

In 1972, construction of the full 18 hole layout again protected "The Tree" which was to now standing in the center of the new 9th fairway.

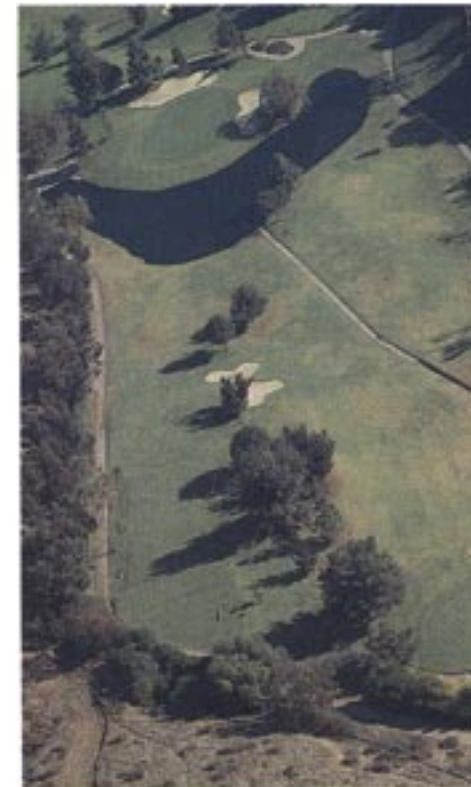
At one point in history, the Golf Committee decided that "The Tree" was unsightly and out of character with our other lush vegetation, and besides, it caught too many good shots, right down the center of the fairway. It had to be cut down, they decreed!

But the RHCC Women's Club was enraged! Dozens of the ladies signed a petition, "S.O.T." (Save Our Tree)! "The Tree" still stands today.



"THE TREE"





**HOLE NO. 11:** This beautiful 3-par hole looking from green to tee can indeed appear ugly when viewed from the golfers teeing position! The lake incircles the front of the green to the back on the right side, inducing the weak-at-heart to lay-up for a wedge second.



**HOLE NO. 10:** The lake in front of the tee is the least of potential problems on this 4-par which is typically directly into the West-erly winds.. The driving trap right and the huge deep bunker in front of the green invite errant shot-makers. Another tiered green produces its share of 3-putts.



ANOTHER "GIANT BALL WASHER" BECKONS TEE SHOTS.



**HOLE NO. 12****PAR 4****426 YARDS****HDCP. 2**

Most members have no memory of power lines crossing the 12th fairway, they're so inconspicuous. BUT:

In 1978 when Dave Markman was playing John Cartwright in the first round of the Club Championship, John hit his second shot, a perfect 2 iron dead on the pin, but it hit the power line.

By the rules, he had to drop and re-hit the shot. Can you believe this: He hit the 2 iron again, and once more his ball struck the same power line! His 3rd. replay was on the green, and John ultimately won his 4th Club Championship in 7 years!

Ted Magaro once hit the same power line twice consecutively while teeing with an 8 iron on the 13th!



**HOLE NO. 12:** Number 2 Handicap, 12 is a long 426 yard 4-par, up-hill from tee to green. Only the "big boys" can hope to get home in regulation two, prompting many Members to consider this as really being a 5-par!. Trees left and right require two precise shots

**HOLE NO. 13****PAR 3****172 YARDS****HDCP. 18**

THE GREEN SUPERINTENDENT'S HOME TO THE LEFT OF 13 AS VIEWED FROM THE NINTH TEE.



**HOLE NO 13:** "Very interesting", Ted Robinson said as he designed and graded this challenging 3-par from a very elevated tee. At only 172 yards, the shortest hole, Ted made it challenging with 3 large bunkers surrounding the green. Pars here are infrequent.

515 YARDS

HDCP. 4



**HOLE NO. 14:** This 5-par double dog-leg, or “Z” hole, has multiple difficulties including the need for a perfectly placed drive, and then comes the decision induced by the water hazard crossing the fairway — to “go for it” or play a conservative “lay-up”? At 515 yards, it deserves its’ No. 4 handicap rating.



193 YARDS

HDCP. 12



**HOLE NO. 15;** An easy 3-par, you say, at only 193 yards! Nonetheless, there is little fairway, severely sloped to send a short hit ball thundering right into oblivion. You’ll not get any run on the sharp up-hill approach requiring that you carry to the green. On reaching the tiered green, you’ll find avoiding three or four putts a problem.

**HOLE NO. 16**

**PAR 5**

505 YARDS

HDCP. 10



**HOLE NO. 16:** 505 yards and straight away, up-hill on the blind tee shot and slightly down-hill into the green, this 5-par has a contoured green with three bunkers to snare your approach shot. Our greens break toward the city, you're told. Take a "read" on this green, then decide who you're going to believe.



**HOLE NO. 17**

**PAR 4**

324 YARDS

HDCP. 14



**HOLE NO. 17:** At 324 yards, just a "pitch and putt" for the long knockers! For anyone else, an intimidating tee shot from high above with O.B. left, jungle right and tiny landing area. The massive green, over 150 feet long is radically sloped, inducing 8-10 foot breaks in some pin positions. Members say you don't "read" this green, you memorize it!





**HOLE NO. 18:** Golf architects strive to make the finishing hole a challenging one, and Ted Robinson certainly achieved that goal here. The 370 yard par-4 is uphill all the way and requires an accurate drive between tall pine trees on both sides of the narrow fairway. Once you get “home”, the large contoured green is a mighty test for players with their bets hanging in the balance!



SOCIAL-ability

Yes, at Rolling Hills Country Club we have one of the finest Golf Courses in the State of California, a great course design that is maintained in stellar condition at all times.

Yes, with our new Clubhouse and associated facilities, we can enjoy a new, modern and spacious “home”. All of the physical and Staff amenities are ours to enjoy.

Yes, we have frequent golf and tennis competitions with tournaments for men, women, couples and juniors.

All of the above do not a Private Country Club make! The necessary added ingredient is sociality, and we also have that in abundance. The Social Events that contribute fun and happiness and meld our Members into a big happy family are so important. Our very active Social Committees thru the years have fashioned a plethora of diversified events to satisfy the pallet of every member. Our current Social Chairman **Bill Christoffers** is following the traditions of his many predecessors, building a special comradery among the members.



1989 SOCIAL CHAIRMAN  
BILL CHRISTOFFERS

Many of the events have achieved “annual” status, and others occur at random intervals as schedules allow. The following briefs describe just a few of the Club’s social events:

**CHRISTMASTIME:** The holiday seasons thruout the year provide the impetus for gala functions. The adults annual Christmas dinner-dance is always a “sold-out” festivity with our Chef presenting an astounding array of, hors d’oeuvres, special wines and a seven course dinner.

THE NECESSARY  
ADDED INGREDIENT  
IS SOCIALITY

The Ladies’ annual Christmas party is a traditional event.



MERLE BOWKER, ANN TINGLE AND SUE WILLIAMS DECORATE THE TREE IN PREPARATION FOR THE DINNER DANCE (1971)

The season also keys the annual Kid’s Christmas party with punch, cookies and cake, presents, and **Santa Claus!** Professional entertainers, from magicians to puppeteers to balloon masters are there to delight the small fry.

**NEW YEARS EVE:** Another annual event is the New Years Eve dinner-dance, always with full

SANTA CLAUS ARRIVES BY HELICOPTER FOR THE ANNUAL CHILDREN’S CHRISTMAS PARTY (1980)







**JOE ARICO RINGS IN THE NEW YEAR WITH THE BAR MASTER. (1971)**

course dinner, dinner wines, and after the clock strikes twelve, the traditional dance and song, followed by after-midnight breakfast snacks.

**JULY FOURTH PICNIC:** The July 4th family picnic has for years been a traditional favorite for the youngsters from three to seventy-five! All sorts of fun and games for the kids, normally including egg-throws, sack races and softball games, with booths for coin tosses, dart balloons, etc. Hot dogs, hamburgers and in the past, pit bar-b-ques constitute the bill of fare. Games for the adults include the



**THE LADIES' LOUNGE AND CARD ROOM**

ever-present maniacal 9 hole putting course, a chipping contest, and sometimes longest drive contest.

**EASTER SUNDAY:** An elegant buffet is available for the member's pleasure, normally served all afternoon. A favorite of the kiddies is the Easter Egg Hunt with the prizes secreted on the practice range and around the Clubhouse.

**PRESIDENTS BALL:** The black tie optional dinner dance to commemorate the new President and Board of directors is held each year



**HALLOWEEN COSTUME FESTIVITIES ARE ENJOYED BY (TOP) BETTY AND DAVID CLARK WITH MERLE AND DON BOWKER (BOTTOM) FORREST AND SUE WILLIAMS, JOE AND GERT DRULINER. (1971)**



**COUPLES TAKE OFF DOWN THE NUMBER ONE FAIRWAY OF THE "DOUBLE-NINE" FOR THE FIRST SHOTGUN START ON THAT COURSE (1969)**

following elections, normally in February. The full course dinner with dance band is an opportunity for the ladies to show their finery and for the gents to dust off their old tuxedos!

**HALLOWEEN:** On some years, Halloween offers an excuse for

another dinner-dance and sometimes a costume party. When the members are in a proper mood, an astounding array of costumes are displayed.

**ONE CLUB:** A group of members wishing to express their thanks for having been accepted into membership created a "Japan Club". The Japan Club sponsored a special golf tournament with outstanding catered Japanese dinner and impressive prizes donated by those members.

Last year, the Board in consultation with the officers of the "Japan Club" agreed to discontinue any "club" within The Club, in order to further promote compatibility among all members.

The special event day, which was enormously popular, will be ob-

served hereafter as the "Board of Directors Invitational" and will be sponsored by the Board for all members.

**LAS VEGAS NIGHTS:** Sometimes billed as "Casino Night" or "Monte Carlo Night", these gambling evenings allow everyone to



**1971 MIXED SCOTCH PLAYERS JIM AND DELPHINE HAWTHORNE, MARGE AND WIL PARKER, KERMIT AND MRS. SMITH, PAULA AND JIM YATES.**

risk millions of dollars in play-money for prizes. Crap tables, roulette wheels, blackjack and other games are offered with professional croupiers.

**GIN RUMMY:** The infrequent gin rummy nights for couples are formatted differently from time to time, but all offer the gin players an opportunity to pit their skills against many others. Prizes are awarded at the end of play, with a snack buffet available thruout the evening.

**MOTHER'S DAY BRUNCH:** A popular event every year, to honor the Club's Mothers, Grandmothers and Great Grandmothers.

**ART AUCTIONS:** We've held a number of art auctions where a dealer brings in hundreds of items, and patiently explains to the members the difference between a lithograph and a pantograph. Paintings, etchings, lithographs and other objects of art are auctioned off to the highest bidder, with a portion of the proceeds returned to the Club.

**CARD PLAYING:** The Men's Lounge and Cardroom is a popular and well populated area where Gin Rummy and Hearts seem to be the favorite games. The ladies have their regular bridge games.

**SOCIAL GOLF:** Other chapters of this book deal with the many golfing activities, but some events,

### THE GAME IS ALMOST AN EXCUSE FOR THE AFTER-GOLF SOCIALIZING

particularly the coed couples golfing tournaments are basically social occasions. Sure, there is the day or evening of golf and there is always the competitive intensity to come in a winner, but the game is almost an excuse for the after-golf socializing.

**COUPLES TWILIGHT:** A most attractive format beckons players to the Couples Twilight tournaments, normally staged every second Friday evening during the summer months. The tee-off is at 5:00 PM

with a draw for pairings. The nine hole tournaments are fun-games like Scotch, Scramble, String Golf, Mulligan buy-ins, etc. After golf, each couple bar-b-ques their own beef, fish or fowl on the charcoal cookers outside, while our kitchen provides all of the accouterments to complete the meal. Eating is outside under the stars on balmy summer nights.

**COUPLES HOME-AND-HOME:** These tournaments are played with several other Country Clubs two or three times a year. Rolling Hills players frequently charter a bus for transportation to the away Club. The golf rivalry is intense followed by dinner and an evening of comradery.

**COUPLES MEMBER-GUEST:** Always a fun format for golf and a delightful dinner following. A great opportunity for our members to repay social obligations and to meet new golfers from other clubs.

**JUNIOR GOLF:** Omer's original concept of an active Junior Golf program has been perpetuated. Junior group lessons are given by our Professional Staff. Junior tournaments and parent-child tournaments hone the interest of beginning golfers.

One of our most illustrious achievers from the RHCC Junior Golf program is PGA Tour Professional, **John Cook**, who in fact won the MEN'S Club Championship in 1975 when he was just 17 years old!

**SCHOOL GOLF TEAMS:** In the spirit of community involvement, The Club allows local golf teams to regularly practice on our course. Included are teams from Rolling



SUMMATION



RHCC'ERS CHEER ON PROFESSIONAL JOHN COOK AT A BOB HOPE CLASSIC TOURNAMENT IN PALM SPRINGS. THE LOCALS STAGED THEIR OWN "NO HOPE CLASSIC!" STANDING MYRNA LEVY, BETTY KIRCHOFF, GENE HUMENIK, ART LEVY, DON GREGOR, JOE NOBLE, KNEELING RENE HUMENIK, DORIS GREGOR PRINCE AND BARBRO CHARTRAND.

Hills and Miraleste High Schools and Harbor College.

**TENNIS:** Our four tennis courts with state of the art lighting accommodate members and guests. Tennis Professional **Mark Thomas** conducts private and group lessons and tennis clinics. There is an active tournament schedule and Pro Exhibition matches from time to time.

FOUR TENNIS COURTS WITH STATE OF THE ART LIGHTING



FOUR TENNIS COURTS WERE DEDICATED IN 1976

**HOUSE ORGAN:** The monthly publication, the Putt Pourri, keeps members informed of golf, tennis and social events, Board actions, Club news and announcements. **Barbara Jenkinson** is the current Editor.

**COMMUNITY SERVICES:** For years, Rolling Hills Country Club has been a favorite facility for community luncheon and dinner meetings for different local organizations, primarily due to the ambience of the clubhouse and the finest

possible cuisine prepared by our Chef and kitchen staff.

Some groups and Clubs use our facilities on a regular monthly basis, and others for infrequent events. Member sponsored business meetings, weddings, showers and company banquets enjoy our hospitalities.

Now, with our greatly expanded clubhouse, we have the largest banquet room in the area, capable of serving over 330 at a sit-down dinner. Or, using various rooms, we

can host several parties at one time without infringing on member services.

It is anticipated that the upstairs Board Room will be used extensively for member sponsored business lunches.

**CHARITY GOLF:** The Rolling Hills CC Golf Course is the "Home Course" for a number of Charity tournaments each year.

For example, the **John Cook** Charity Golf Tournament is held each year with the proceeds going to the South Bay Childrens Health Center.

Other benefactors include the San Pedro and Little Company of Mary hospitals, the Switzer Foundation, Harbor City/Lomita Lions Club, Lomita Optimist Club, and others.

TENNIS PROFESSIONAL MARK THOMAS (RIGHT) GIVES STROKE POINTERS TO JIM HYNES



Remarks from the President:



As we complete 23 years as a family oriented Country Club we can be proud of our progress. We thank those Officers and Directors who have donated their time and efforts and unselfish giving of their expertise in guiding the Club so successfully.

We have grown from a 800 square foot Clubhouse and Golf Shop to a Pro Shop of 3200 square feet along with a Clubhouse of over 25,000 square feet; from a nine hole Executive Course to an eighteen hole Championship course.

The future Officers and Directors (and the members) face new challenges in the future. We own approximately one-third of the Golf Course land -- we lease the balance. We must make provisions now and in the future to purchase more land. Our maintenance and replacement of obsolete equipment and systems is mandatory, including immediate attention to our aged sprinkling system, lakes, and some of the tees and greens.

We thank our Staff, past and present, for your services in making Rolling Hills Country Club the best in Southern California.

**Bill Delaney**  
President

Remarks from the Secretary:

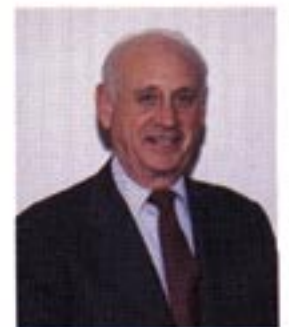
**RHCC** has a rich heritage which provides the amenities, comfort and environment so attractive to us. More than just a good golf course, it has become an important social center for many of us.

Where else can successful executives, professionals and entrepreneurs and their wives enjoy each other's company, exercise their competitive nature, and treat each other with good natured, but earthy needling, at our favorite sport.

As the trading price of the memberships has steadily increased, reflecting the unique value of the physical and social "Club", the elected Boards of Directors have attempted to maintain high standards of service, facilities and golf course conditions.

Recognizing those important factors, the Board was highly pleased when Wes Kirchoff agreed to act as Editor for our "Commemorative Issue". For many of us, particularly those who are charter members, it will be a treasured album.

**Dick Ettington**  
Secretary





**PLEASE?**

## APPEND. 1: CLUB OFFICERS

YEAR	PRESIDENT	1ST VP	2ND VP	SECRETARY	TREASURER
1969	Omer Tingle		Dick Roemer	Dick Roemer	
1970	Omer Tingle	Dr. Chas Zigrang	Dick Roemer	Dick Roemer	
1971	Dick Roemer	Dr. Chuck Kirsnis	Earl Smith	Don Gregor	Bob Jennings
1972	Dick Roemer	Dr. Chuck Kirsnis	Earl Smith	Don Gregor	Jack Reed
1973	Jack Reed	Art Gardner	Dr. John Goode	Howard Shoem	Gene Gregory
1974	Gene Gregory	John Colyer	Bud Hebson	Wes Kirchoff	Jack Reed
	Jack Reed				
1975	Jack Reed	John Colyer	Bud Hebson	Wes Kirchoff	Bud Babcock
1976	Bud Hebson	Art Gardner	Don Bowker	Wes Kirchoff	Bud Babcock
1977	Bud Hebson	Art Gardner	Don Bowker	Wes Kirchoff	Jack Reed
1978	Bud Hebson	Don Bowker	Art Gardner	Wes Kirchoff	Larry Bowman
1979	Don Bowker	Art Gardner	Leonaed Kroloff	Wes Kirchoff	Harry Kim
1980	Jim Hawthorne	George Walker	Frank Gastelum	Ron Ruffalo	Joe Strickland
			Ray Creal		
1981	Frank Gastelum	Ron Ruffalo	Howard Huget	Tony Fieri	Ray Creal
1982	Howard Huget	Norm Campbell	Leonard Meier	Tony Fieri	Howard Fjellstrom
1983	Howard Huget	Leonard Meier	Dr. Ed Samples	Burt Larson	Howard Fjellstrom
1984	Howard Huget	Burt Larson	Art Gardner	Mel Rowan	Paul Giuliano
1985	Burt Larson	Ron Ruffalo	Dr. Mel Rowan	Marc Frederic	Paul Morey
1986	Eldon Mangold	Richard Bender	Joe Ferderber	Marc Frederic	Bill Delaney
1987	Eldon Mangold	Richard Bender	Joe Ferderber	Marc Frederic	Bill Delaney
1988	Bill Delaney	Joe Ferderber	Maury Nardone	Dick Ettington	Dan Sasahara
1989	Bill Delaney	Maury Nardone	Bill Christoffers	Dick Ettington	Dan Sasahara



**THE SIXTH GREEN**

### RHCC PAST PRESIDENTS



**OMER TINGLE**



**DICK ROEMER**



**JACK REED**



**BUD HEBSON**



**DON BOWKER**



**JIM HAWTHORNE**



**FRANK GASTELUM**



**HOWARD HUGET**



**BURT LARSON**



**ELDON MANGOLD**



**BILL DELANEY**

**MARINA AND GINA CHECK OUT THE WOOD PANELED LOUNGE BAR.**



## APPEND. 2: COMMITTEE CHAIRMEN

YEAR	GOLF	GREEN	FINANCE	SOCIAL	MEMBERSHIP
1969	Lou D'Assalenaux	Omer Tingle	Jim Strutzel	Jack Drown	Fred Tourtelot
1970	Bob Shaller	Dr. Lloyd Jones	Bob Jennings	Rod Freeman	Wheeler Parks
1971	Jim Cook	Don Gregor	Jack Reed	Bob Courtney	Phil Larner
1972	Ray Alexander	Art Gardner	Jack Reed	Rod Freeman	John Parker
1973	Ray Alexander	Art Gardner	Gene Gregory	Rod Freeman	John Parker
1974	Gary Jackson	Art Gardner	Jack Reed	Forrest Williams	None
1975	Don Bradfield	Art Gardner	Jack Reed	Forrest Williams	Bud Hebson
1976	Norm Campbell	Art Gardner	Bud Babcock	Bob Will	Larry Bowman
1977	Norm Campbell	Art Gardner	Larry Bowman	Leonard Kroloff	Harris Simpson
1978	Norm Campbell	Art Gardner	Larry Bowman	Leonard Kroloff	Harris Simpson
1979	George Walker	Art Gardner	Harry Kim	Joe Strickland	Bud Hebson
1980	George Walker	Norm Campbell	Joe Strickland	Mason Mallory	Charles Jordan
1981	Howard Huget	Norm Campbell	Ray Creal	Mason Mallory	Charles Jordan
1982	David Ball	Norm Campbell	Howard Fjellstrom	Bert Larson	David Iida
1983	David Ball	Norm Campbell	Howard Fjellstrom	Dr. Ed Samples	Art Gardner
1984	Frank Gastelum	Dr. Mel Rowan	Paul Giuliano	Dorothy Corsaro	Art Gardner
1985	Norm Campbell	Dr. Mel Rowan	Paul Morey	Eldon Mangold	Art Gardner
1986	Joe Ferderber	Fabian Abram	John VanderHulst	Maury Nardone	Art Gardner
1987	Joe Ferderber	Fabian Abram	Wayne Snaveley	Paul Angelich	Bud Babcock
1988	Bill Christoffers	Paul Angelich	Dan Sasahara	Dick Ettington	Bud Babcock
1989	Don Bradfield	Maury Nardone	Dan Sasahara	Bill Christoffers	Hap L'Heureux

YEAR	LRP	HOUSE	INTERNAL AUDIT	PUBLICITY	TENNIS
1969	Fred Tourtelot	Bart Earle		Dr. Chuck Zigrang	
1970	None	Dr. Bill Riddell		Wes Kirchoff	
1971	Dr. Chuck Kirsnis	Earl Smith		Jim Jordan	
1972	Dr. Chuck Kirsnis	Earl Smith		Ed Hummel	
1973	Dr. John Goode	Lew Crocker		Buck Weaver	
1974	Dr. John Goode	John Colyer		Wes Kirchoff	
1975	Don Bowker	John Colyer		Bob Will	
1976	Bill Steinmetz	Joe Arico		Don Bradfield	Don Bowker
1977	Bill Steinmetz	Joe Arico		Bob Will	Don Bowker
1978	Bill Steinmetz	Joe Arico		Wes Kirchoff	Marty Jacobs
1979	Ralph Scriba	Jerry Del Conte	Jim Hawthorne	Discontinued	Don Bowker
1980	Frank Gastelum	Jerry Del Conte	Ron Ruffalo		None
1981	Frank Gastelum	Leonard Meier	Ray Creal		None
1982	Leonard Meier	Gene Leming	Dr. Ed Samples		Fritz Probst
1983	Leonard Meier	Burt Larson	H. Fjellstrom		Fritz Probst
1984	Marc Frederic	Burt Larson	Paul Giuliano		Fritz Probst
1985	Ron Ruffalo	Richard Bender	Paul Morey		James Hynes
1986	Howard Huget	Ron Ruffalo	Richard Bender		Bill Delaney
1987	Howard Huget	Maury Nardone	Bill Delaney		Joe Ferderber
1988	Eldon Mangold	Dick Ettington	Joe Ferderber		Bill Christoffers
1989	John Hennekam	Bud Babcock	Bill Christoffers		
		Al Avoian			



HAP L'HEUREUX



AL AVOIAN



JOHN HENNEKAM

## APPEND. 3: WOMEN'S OFFICERS

YEAR	CHAIRMAN	VICE CHAIRMAN	SECRETARY	TREASURER
1969	Dee Strohecker	Betty Clark	Helen Jennings	Jean Lombardo
1970	Dee Strohecker	Betty Clark	Helen Jennings	Jean Lombardo
1971	Betty Clark	Rosalie Stockinger	Lois Humphreys	Helen Mitchell
1972	Lois Humphreys	Joy Bower	Edie Jordan	Pat White
1973	Pat White	Ann Tingle	Ginger Magaro	Paula Yates
1974	Ann Tingle	Dixie Lopez	Phyllis Black	Marion Parks
1975	Dixie Lopez	Joan Foxx	Marge Crawford	Teb Jean
1976	Dixie Lopez	Joan Foxx	Marge Crawford	Teb Jean
1977	Ruth Gage	Jerry Parker	Jean Klee	Sally Fischer
1978	Ruth Gage	Jerry Parker	Jean Klee	Sally Fischer
1979	Jerry Parker	Evelyn Mills	Janet Jordan	Doris Gibson
1980	Evelyn Mills	Myrna Levy	Janet Jordan	Doris Gibson
1981	Myrna Levy	Ruth Fossette	Doris Redman	Helen Green
1982	Ruth Fossette	Betty Poe	Jean Waggoner	Nancy Jackson
1983	Betty Fox	Barbara Meier	Teb Jean	Barbara Ruffalo
1984	Dorothy Corsaro	Elaine Wright	Marge Crawford	Barbara Ruffalo
1985	Barbara Ruffalo	Pat Felgar	Betty Ettington	Doris Redman
1986	Betty Ettington	Doris Redman	Ginger Magaro	Marie Alessandra
1987	Janet Jordan	Gloria Miller	Jeanette Duval	Marie Alessandra
1988	Janet Jordan	Sue Williams	Myrna Levy	Esther Beard
1989	Sue Williams	Chong Chung	Patricia L'Heureux	Betty Kirchoff
1990	Sue Williams	Jeanette Duval	Sylvia Cootes	Betty Kirchoff



DEE STROHECKER



BETTY CLARK



LOIS HUMPHREYS



PAT WHITE



ANN TINGLE



DIXIE LOPEZ



RUTH GAGE



JERRY PARKER



EVELYN MILLS



MYRNA LEVY



RUTH FOSSETTE



DOROTHY CORSARO



BARBARA RUFFALO



BETTY ETTINGTON



JANET JORDAN



SUE WILLIAMS

## APPEND. 4: MENS GOLF CHAMPS

YEAR	MENS CHAMP	SENIORS CHAMP	ROUNDUP INVITATIONAL
1970	Jim Mills	John McCrossen	
1971	John Cartwright		Jack Poe - Tom McLenaghan
1972	Jim Mills	None (Const)	None (Const)
1973	John Cartwright	Charlie Weis	Ted Van Huisen - Don Crowell
1974	John Cartwright	Norm Campbell	Gary Jackson - Darrall Wilkins
1975	John Cook		Don Corsaro - Tony Maggio
1976	Dave Markman	Bill Dumble	Gary Jackson - Darrall Wilkins
1977	Dave Markman	Don Bowker	Dr. John Goode - John Grubb
1978	John Cartwright	Norm Campbell	George Walker - Larry Rice
1979	George Walker	Dr. John Goode	Don Hogan - Steve Bogan
1980	George Walker	George Walker	Don Hogan - Steve Bogan
1981	George Walker	Jim Mills	George Walker - Jeff Davis
1982	John Cartwright	Joe Noble	Don Hogan - Steve Bogan
1983	Fritz Probst	Don Hogan	Don Hogan - Steve Bogan
1984	Alan Glaser	Jim Mills	Don Hogan - Steve Bogan
1985	Mike Abram	George Walker	Gary Jackson - Darrall Wilkins
1986	Bill Dietz	Dr. John Goode	Dr. John Goode - David Dischinger
1987	Mike Abram	Dr. John Goode	Don Hogan - Steve Bogan
1988	Mike Abram	Dr. John Goode	Hogan - Steve Walker - Davis
1989	Mike Abram	George Walker	Mike Abram - Mike McClung



MIKE ABRAM



GEORGE WALKER

## APPEND. 6:

### COUPLES CHAMPS

YEAR	COUPLES CHAMPS
1976	Gene/Rene Humenik
1977	
1978	Cap/Jean Klee
1979	Jack O'Connor - Jacque Abell
1980	Don/Doris Gregor
1981	
1982	
1983	Takeo/Kazuke Mizoo
1984	
1985	
1986	Young/June Kim
1987	Sam/Yoko Izumi
1988	Art/Tracy Brody
1989	Ed/Suezy Park



KEVIN FREW

## APPEND. 7: CHEFS

1970-1971	John Bongiovanni
1971	Ray Mochulski
1971	Royal D. Lee
1971-1972	Clarence Simmons
1972-1981	Joe Tantillo
1981	Henry Cohen
1982-1983	Steve Beluris
1983-1986	Holly Mason
1986-1989	Robt. Sakellarides
1989	Kevin Frew

KEVIN HAS COME A LONG WAY SINCE HE STARTED IN RESTURANTS IN 1972 AS A DISH-WASHER IN LONG BEACH.

HE HAS PREVIOUSLY BEEN EXECUTIVE CHEF AT THE RIVERIA COUNTRY CLUB, HOLIDAY INN AT LAX AND ICHABOD CRANES IN TORRANCE.

## APPEND 8: CLUB MANAGERS

## APPEND. 5: GOLF CHAMPS

YEAR	WOMENS CHAMP	JUNIOR CHAMP	MENS MEMBER/MEMBER
1970	Pat Felgar		
1971	Pat Felgar	Alex Nikolakopoulos	Dr. Cliff Easley - Bill Kirk
1972	None (Const)	John Cook	None (Const)
1973	Pat Hoff	David Bilas	Ray Magaro - John Cartwright
1974	Betty Sichel		Dr. John Goode - Mitch Carter
1975	Betty Sichel	John Cook	John Cartwright - Jim Cook
1976	Pat Hoff	Dean Gulbranson	Dr. Gene and Todd DeAngelis
1977	Sally Jones	Dean Gulbranson	John Cartwright - Jim Mills
1978	Pat Hoff		
1979	Pat Hoff		George Walker - Don Hogan
1980	Pat Hoff	Joe Goswitz	John Cartwright - Jim Mills
1981	Pat Felgar	Joe Goswitz	
1982	Katsue Kato	Joe Goswitz	Dr. Ed Samples - Stoltz
1983	Pat Felgar	Price Shoemaker	John Cartwright - Jim Mills
1984	Yoshiko Iida	Price Shoemaker	Dr. John Goode - Dr. Ed Samples
1985	Yoshiko Iida	Joe Goswitz	Alan Glaser - Mike Abram
1986	Yoshiko Iida	Justin Anderson	Alan Glaser - Mike Abram
1987	Yoshiko Iida		John Cartwright - Jim Mills
1988	Yoshiko Iida	Serge Atanous	Randy Brant - Dave Smith
1989	Tracy Morrigan	Serge Atanous	John Cartwright - Jim Mills



TRACY MORRIGAN



SERGE ATANOUS

1963-1970	Joe Deeble
1970-1979	Charles Reeve
1979	John Frey III
1980-1981	Roy Moss
1982-1983	Gary Tidwell
1983-1985	Bob McCall
1986-	Bryan Bahman



BOB SPARKS

ROBERT SPARKS, FOOD AND BEVERAGE MANAGER, IS A NATIVE CALIFORNIAN WHO CAME TO ROLLING HILLS COUNTRY CLUB IN MAY OF 1987. HE WAS SIMILARLY EMPLOYED AT BIG CANYON CC FOR SIX YEARS.

General Manager Bryan Bahman joined RHCC in April of 1986 coming to us from Big Canyon CC.

In addition to being a very capable General Manager, Bahman demonstrated his superior knack for maintaining membership amenities and comforts thruout the new clubhouse construction. The food and beverage service in the temporary quarters (new pro shop) were outstanding, and all done without conventional kitchen facilities.



BRYAN BAHMAN



TOM HERMOGENO

COMPTROLLER TOM HERMOGENO EARNED HIS CPA DEGREE IN THE PHILIPPINES AND HAS BEEN ACTIVE IN THE ACCOUNTING PROFESSION FOR 20 YEARS.

HE LISTS BOWLING, FISHING AND CAMPING AS OUTSIDE INTERESTS.

## APPEND. 9: GREEN SUPERINTENDENTS

1973 Hector Clark  
1970-1980 Bill Gallegos  
1981- Jim Neal



**JIM NEAL**

**Jim** joined RHCC in December of 1980 after two years at Indian Wells CC in Palm Springs. He majored in agronomy and plant and soil sciences at Montana State University in Bozeman. In the early 1970's **Jim** ran a 9-hole course in Dillon, Montana, while his wife, **Linda**, handled the food and beverage service.

**Jim's** son **Kevin** is also an agronomist, having graduated from University of California at Riverside, and is now an Assistant Supervisor in New Jersey.

Besides playing a bit of golf, **Jim** is an avid fly fisherman. His daughter **Kelly** has taught fly tying at the University in Riverside and is sought after to teach tying along with casting and fishing techniques.

**Jim's** expertise in his field is evidenced by our lush greens and fairways, maintained by our staff of 14 greenskeepers.

## APPEND. 10: TENNIS PROS

1976 Carl Thompson  
1977-1983 Leon Carpenter  
1983- Mark Thomas



**MARK THOMAS**

Mark Thomas has been the Head Tennis Professional at RHCC since May of 1983. In addition to his duties here, he is also Head Tennis Coach at El Camino College. Mark is married and lists Racketball, off-road riding and real estate as his outside interests.

## APPEND. 11: PUTT-POURRI EDITORS

1969-1972 Wes Kirchoff  
1973 Bud Hebson  
1974 Larry Bowman  
1975 Bud Babcock  
1976-1979 Wes Kirchoff  
1980-1981 Jerry Wisot  
Bob Webster  
1982- Barbara Jenkinson

**BARBARA JENKINSON** CAME TO RHCC IN MAY OF 1980 AND IS THE GENERAL MANAGER'S SECRETARY AND HELPFUL ASSISTANT TO ALL WHO NEED OFFICE FUNCTIONS. SHE EDITS THE PUTT POURRI IN HER "SPARE TIME".

BORN IN LONDON, SHE COMPLETED BUSINESS SCHOOL THERE AND THEN CAME TO THE UNITED STATES. SHE PREVIOUSLY HELD POSITIONS WITH HILTON HOTELS IN SALT LAKE AND BLUE CROSS.



**BARBARA JENKINSON**

## APPEND. 12: ACTIVE CHARTER MEMBERS

(OF ORIGINAL 265 CHARTERS)

7	Jack Drown	90	Whitey Blanciak	166	James McCulley
9	Clifford Richards	94	Betty Meissner	173	Art Gardner
10	Jack Robertson	99	Ronald Saunders	177	Fritz Probst
11	John Robertson	101	Leo Lambert	178	Gabor Korody
12	Jack Berry	108	Gary Jackson	193	Forrest Williams
17	Mark McKie	114	Jack O'Connor	200	James Hynes
22	Jack Reed	118	Don Bradfield	212	Wes Kirchoff
46	Woody Culp	119	Richard Foxx	219	Albert Nakazawa
57	Jim Mills	135	Don Wilson	221	Dr. Richard Meyer
64	Alex Harkias	141	Ken Crane	223	Dr. Irv Sokolsky
66	Kelly Sims	148	Bill Kirk	226	Dr. Lloyd Jones
67	Margaret Wagner	149	Fritz Probst	228	Richard Campbell
70	Dr. Joe Lenihan	152	Robert Sumner	229	John Cartwright
73	Robert Dollarhide	154	John Colyer	236	Helen Green
82	Dr. Jack Lynn	156	Elaine Wright	240	Dr. Dave Markman
83	Gene Parana	159	Joel Lehman	248	Ted Magaro
				256	Dr. Chas Kirsnis

## APPEND. 13: HONORARY MEMBERS

John Cook, PGA Golf Professional  
Murietta, CA.  
George Graziadio, Imperial Bank  
P.V. Estates, CA  
Theodore G. Robinson, Golf Course Architect  
Laguna Beach, CA  
Omer K. Tingle, Founder, Developer  
Porterville, CA

**John Cook** joined the Pro Tour in 1979 after an auspicious amateur record including winning the California, Ohio (twice) and U.S. Amateur titles.

His first Pro win was the Brazilian Open in 1979 followed by the Crosby open in '81; World Cup team play with Rex Caldwell in Indonesia and the Canadian Open in '83 and the International Tournament in '87.

He had hand surgery and sat out most of the 1989 season, but is finally 100 percent and is anxiously looking toward a busy schedule in 1990.



**JOHN COOK, PGA AT 1987 MASTERS**



**GEORGE GRAZADIO**

The proverbial "Good Old Boy, Founder and Vice Chairman of the Board, President and Chief Executive Officer of Imperial-Bancorp and affiliated organizations.

## An Open Letter From John Cook:

To The Members and Staff of Rolling Hills Country Club:

As I sit here on one of my many 'plane flights each year, so many memories come back to me of my years of association with Rolling Hills C.C.

From my Mom dropping me off at 9:00A.M. on a summer morning and saying that she will pick me up at 6:00 P.M. that evening, to the Honorary Membership so graciously given to me a couple years ago.

Memories: From the par 3 course; Junior clinics in the netted driving range, given by Pat and Jack; the caddy days; the days of earning "Blue Card" privileges to play; then

winning the Men's Club Championship 'way back when; to now hosting an annual charity event for the underprivileged children of our community.

From the par 29 days to the double tees - double greens, to what is now one of the finest golf courses in Southern California, I have many fond memories.

Congratulations, Rolling Hills Country Club! You will always have a very large place in my heart.

Sincerely,  
John Cook

THE COOK FAMILY, JOHN, LYDA, JIM AND CATHY RECEIVING THE JACK NICKLOUS "GOLF FAMILY OF THE YEAR" AWARD IN 1988.



Lyda Cook wrote:

" Rolling Hills Country Club proved to be a great training ground for Cathy as well as John, as we lived on the course and they played and practiced every day. The encouragement of the Staff and members remains as strong for them today as it was 20 years ago when we became members."

## APPEND. 14: HOLES-IN-ONE RECORDED

DATE	NAME	HOLE			
10-69	"Double-Nine" Opened for play				
2-70	Bob Weaver	11	11-83	Bob Winship	11
3-70	Tom Abney	11	1-84	Dr. Mel Rowan	4
3-70	John Zimmerman	6	1-84	"Tommy" Tomkins	13
5-70	Bill Kirk	17	5-84	Chuck LaBelle	4
6-70	Jack Reed	8	7-84	Barbara Ruffalo	4
6-70	Howard Ratcliffe	6	7-84	Maury Nardone	15
10-70	Kermit Smith	7	8-84	Lilu Pair	4
10-70	Ginny Smith	8	1-85	Joe Noble	4
2-72	Eddie Hoffman	7	2-85	Dr. Pete Turner	13
5-72	Nancy Osbon	8	3-85	George Walker	15
			6-85	Kelly Sims	11
3-73	Full 18 Holes Opened For Play		6-85	Bob Menzie	11
			7-85	Scott Lasky	11
5-73	Herman Mitchell	13	7-85	Bill Mertz	4
6-73	John Zimmerman	?	8-85	Alan Glaser	4
6-73	Jack O'Connor	4	12-85	Tony Trutanich	4
6-73	Greg Bowman	6	12-85	Young Kim	6
8-75	John Haworth	11	12-85	Bruce Lockwood	13
8-75	Charles Duval	13	12-85	Mitsuaki Watanabe	4
8-75	Len Goswitz	13	1-86	Frank Gastelum	4
1-76	Norm Donninger	13	7-86	Marie Alessandra	13
3-76	Bryan Levy	11	7-86	Nobory Yamazaki	4
6-76	Pat Felgar	11	12-86	John Cartwright	11
7-76	Don Bathgate	6	2-87	Fred Reidel	13
2-77	Greg Bowman	4	4-87	Dan Kazarian	4
6-77	John Whitehead	11	5-87	Akiko Takenaka	4
9-77	Marge Crawford	4	6-87	Scott Lasky	13
5-78	Jeanette Duval	13	7-87	Scott Lasky	4
7-78	Bill Steinmetz	6	9-87	Scott Lasky	4
2-79	Janet Jordan	13	3-88	Tom Shimizu	4
7-79	Sally Fischer	13	3-88	Alan Glaser	4
7-79	George Walker	4	3-88	Whitey Blanciak	13
3-80	Bob Will	11	3-88	Ok Gi An	13
3-80	Ray Martin	6	5-88	Whitey Blanciak	13
7-80	Bob Giuliano	13	6-88	Jan Duval	4
5-81	Dr. Tom Kamadoi	4	6-88	Dr. Jack Lynn	15
8-81	Norm Campbell	4	7-88	Frank Iida	4
5-82	Hap Hartford	11	11-88	Thomas Koh	4
6-82	John Hennekam	4	11-88	Fabian Abram	11
6-82	Frank Iida	13	1-89	Joel Lehman	4
7-82	Bill Delaney	13	3-89	Jim Giacalone	13
1-83	Dr. Roland Smith	13	4-89	David Hong	?
1-83	Hap Hartford	11	5-89	Sylvia Cootes	13
4-83	Lilu Pair	11	7-89	Art Gardner	13
6-83	Alice Terrill	13	9-89	Dave Iida	13

And appologies to those we've missed!

## APPEND. 15: COURSE RECORDS

HOLE	1	2	3	4	5	6	7	8	9	OUT	10	11	12	13	14	15	16	17	18	IN	TOT
PAR	4	4	4	3	5	3	4	4	4	35	4	3	4	3	5	3	5	4	4	35	70
John Cook	4	3	3	3	3	3	3	4	4	30	4	3	3	3	4	3	4	4	5	33	63
Mary Enright *	4	4	3	3	4	3	4	4	4	33	4	3	4	3	5	3	5	3	4	34	67

Played from the Men's BLUE tees!

## APPEND. 16: GOLF STAFF



THE NEW PRO SHOP IS BRIGHT AND AIRY



JACK HOLLIS AND PAT CHARTRAND,  
PGA PROFESSIONAL GOLFERS.

RHCC STAFFERS INCLUDE (STANDING L TO R), PAT CHARTRAND, BARBRO CHARTRAND, DALE STACKHOUSE, GAYLE LANNING SAUNDERS, MARK THOMAS, JACK HOLLIS, (KNEELING) MIKE WUERTH AND TAMI BOUSE.



GAYLE LANNING SAUNDERS,  
FASHION COORDINATOR

RICK CHARTRAND,  
PGA APPRENTICE  
PROFESSIONAL



JIM GIACALONE IS ASSISTED BY LEO ISAS,  
GROUNDS FOREMAN, AS HE ASCENDS LADDER  
FOR A BETTER PHOTO PERSPECTIVE

### EDITOR'S COMMENT:

Many people have contributed to this publication, but none more so than our Professional Photographer, Jim Giacalone.

He ventured forth in a Hughes Jet 'Copter, truck, golf carts and a-foot, taking over 300 photographs for selection and use herein.

This publication would not have been possible without his skill and devotion.





**ROLLING HILLS COUNTRY CLUB  
IS A MATURE, GREAT, GOLF COURSE.**



**THANKS TO THIS FINE STAFF, THE GOLF COURSE IS ALWAYS BEAUTIFUL. (STANDING L TO R): ERNESTO GONZALES, HUMBERTO LIMON, JOSE SANCHEZ, NATIVIDAD ISAS, JIM NEAL, LEO ISAS, LUIS ROBLES, GABINO ROBLES, (SITTING), FELIX MEZA, RAMON ROBLES, JUAN SALVATIERRA, ELISEO PENA, MAGDALENO PACHECO AND PEDRO AVALOS.**